

NORTH  
**Dakota**  
Be Legendary.™



## Standing Rock Native American Scenic Byway In the Shadow of Legends

35 Miles

3 Days/2 Nights

Gateway City: Bismarck/Mandan

North Dakota

National Travel Center  
433 North Charlotte Street  
Lancaster, PA  
717-617-2051

# Standing Rock Native American Scenic Byway In the Shadow of Legends

35 Miles

3 Days/2 Nights

Gateway City: Bismarck/Mandan  
North Dakota

On their famous expedition to find a route to the Pacific Ocean in 1804, Lewis and Clark traveled north on the Missouri River from St. Louis, into what is now North Dakota. They set up camp at Four Mile Creek and since at that time, the territory of the Great Sioux Nation reached all the way to present day Wyoming, it is likely they met tribal leaders shortly after they crossed into the state. Later they passed the remains of On-A-Slant Village abandoned in 1781.



When Sioux lands were reduced to the east side of the Missouri River and the South Dakota state line, General Custer and the 7<sup>th</sup> Cavalry violated the treaty by marching into the Black Hills to find the sought-after gold. When the Sioux did not want to rent their land to the US Government, a series of battles ensued, culminating in the notorious Battle of Little Bighorn, also known as Custer's Last Stand.



The Sioux resistance to renting the land was led by spiritual leader Sitting Bull, whose gravesite was at Fort Yates, on the Standing Rock Native American National Scenic Byway. Famed for his prophetic visions of battles, he foresaw the outcome of the Battle of Little Bighorn. Sitting Bull survived war, prison, and exile, only to be tragically killed by Indian Agency Police on the Standing Rock Indian Reservation. They feared he would support the Ghost Dance, a tribal dance steeped in Christianity, testifying that the second coming of

Christ would save the red children, make the world new again, and return the bison to the lands. After Sitting Bull was killed, he was buried right outside Fort Yates and later moved to South Dakota. The Sitting Bull Burial Site State Historic Site is marked by a boulder on a dusty side road two miles west of Hwy-1806.

# Standing Rock Native American Scenic Byway

## In the Shadow of Legends

35 Miles

3 Days/2 Nights

Gateway City: Bismarck/Mandan  
North Dakota

You'll learn more of this story along the route of the Byway, as well as other stories of tribal heritage since the corridor lies entirely within the Standing Rock Indian Reservation, spanning 35 miles from Cannon Ball to the South Dakota border. The magnificent vistas and sparkling waters of the Missouri River appear as they would have to Lewis, Clark, Sakakawea, and Sitting Bull. Lewis and Clark stopped along the Byway 14 times and you can too.

### Touring the Byway

We recommend starting your journey in Bismarck exploring a collection of locations that begin to reveal the story of Native American Nations in North Dakota. Exhibits at the North Dakota Heritage Center and State Museum trace North Dakota's history for 600 million years. The Native American Hall of Honor celebrates the Native Americans who have distinguished themselves in the state. The Lewis and Clark Riverboat lets you ply the waters of the Missouri River as the explorers did, On-a-Slant Village at Fort Abraham Lincoln State Park, Five Nation Arts and Chief Looking's Village all add to the story. After a night's stay in Bismarck, you'll be on your way to explore Huff Indian Village State Historic Site and Fort Rice State Historic Site, before you reach Cannon Ball at the start of the Byway. After exploring the Historic Cannonball Ranch, you'll be on your way to Fort Yates, all the way enjoying the fantastic roadside views of hills and buttes, ravines and rolling ridges along the way. Keep your eyes out for herds of bison and eagles flying overhead.



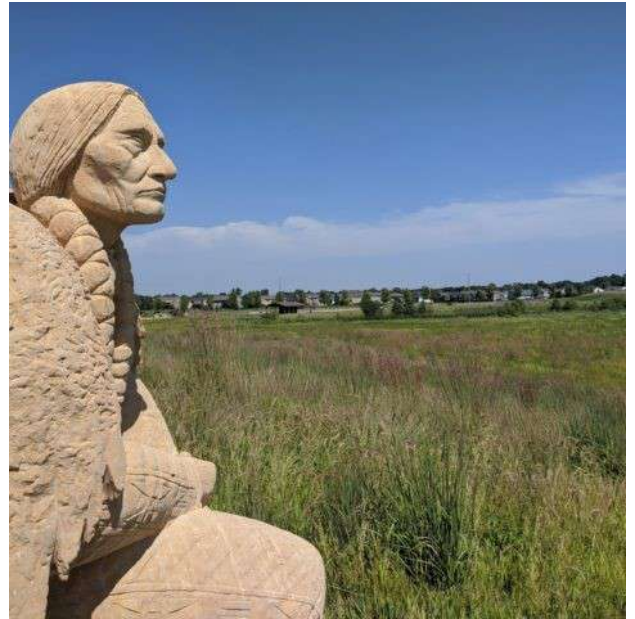
# Standing Rock Native American Scenic Byway In the Shadow of Legends

35 Miles

3 Days/2 Nights

Gateway City: Bismarck/Mandan  
North Dakota

Fort Yates is the site of the Fort Yates Stockade, with the remains of the old guardhouse the only remaining original building from the town's very early days when three officers and 85 men tried to overpower the Native Americans who had experienced thousands of years of self-determination, the Sitting Bull Visitor Center and the Sitting Bull Burial Site State Historic Site. The Standing Rock Monument on Main Street commemorates the wife of a Yanktonai man who stood her ground and refused to move when the camp was struck. Searchers found nothing but a stone standing upright where they left her. You can also walk the Lewis and Clark Legacy Trail at Prairie Knights Casino and Resort, where you will stay for the night.



The next morning, just south of Fort Yates, visit Four Mile Creek where Lewis & Clark camped in 1804, after having traveled over 1,200 miles in five months on the Missouri River. Traveling south to the South Dakota border the scenery is truly magnificent, delivering one gorgeous landscape after another. When the sun is setting, it highlights vast fields of sunflower fields that come up so quickly, you'll be in South Dakota before you know it.



# Standing Rock Native American Scenic Byway In the Shadow of Legends

35 Miles

3 Days/2 Nights

Gateway City: Bismarck/Mandan

North Dakota

As you pass over the border, the line was marked in 1892 with 720 stone monuments of Sioux quartzite; "silent prairie sentinels" to mark the border with "conspicuous monuments of the most durable material." Each post was marked "N.D." and "S.D." facing north and south. From there, we wish you a safe and pleasant journey home, or on another North Dakota Scenic Byway.



# Standing Rock Native American Scenic Byway In the Shadow of Legends

35 Miles  
3 Days/2 Nights  
Gateway City: Bismarck/Mandan  
North Dakota

## DAY ONE



### **Bismarck**

The Bismarck-Mandan area has welcomed visitors since Lewis and Clark paddled up the Missouri River in 1804. Along the way, they encountered the Mandan Nation at Chief Looking's Village, On-a-Slant Village and Double Ditch Village. Originally named Edwinton, the settlement was located here when the Northern Pacific Railroad reached the eastern banks of the Missouri River. Camp Greely provided security to expand the settlement that was soon named for German Chancellor Otto von Bismarck. Bismarck grew quickly from its beginnings as an outlaw town into the state capital of North Dakota, and today a hub of culture, history and shopping.

# Standing Rock Native American Scenic Byway In the Shadow of Legends

35 Miles

3 Days/2 Nights

Gateway City: Bismarck/Mandan  
North Dakota

## North Dakota State Capitol/North Dakota Heritage Center and State Museum

Nearly 325 acres was deeded by the Northern Pacific Railroad to North Dakota in 1883, to erect a state capitol, which was consumed by fire in 1930. The state sold 160 acres of the grounds to help pay for a second building. Today, the tall, 1934, art deco North Dakota State Capitol is set on landscaped grounds that also hosts the North Dakota Heritage Center and State Museum, featuring four museum galleries tracing the state's rich history from its earliest geologic formation 600 million years ago. In 2008, the museum, called a "Smithsonian on the plains," became home to a rare mummified Edmontosaurus with fossilized skin.

The Native American Hall of Honor celebrates Native Americans who contributed to North Dakota culture and history. Exhibits include artifacts and videos illustrating their remarkable histories and a 12-foot bronze statue depicting Sakakawea looking westward, with her infant son, Jean Baptiste (Pomp), strapped on her back. The artist's model for Sakakawea was her granddaughter, Mink Woman, from the Fort Berthold Indian Reservation in North Dakota. 612 East Boulevard Avenue, Bismarck, ND 58505, 701-328-2666 M-F 9AM-4PM, Sat-Sun 11AM -4PM.

## Lewis and Clark Riverboat

Ply the Missouri River on the Lewis and Clark Riverboat, continuing the proud tradition of Missouri River steamers at the Port of Bismarck.

1700 North River Road, Bismarck, ND, 58503, 701-255-4233 1-1 ½ hour cruises,  
Call for schedule.



# Standing Rock Native American Scenic Byway In the Shadow of Legends

35 Miles

3 Days/2 Nights

Gateway City: Bismarck/Mandan  
North Dakota

## **Fort Abraham Lincoln State Park/Custer House/ On-A-Slant Village**

All aboard! Take the 9-mile scenic railroad to Fort Abraham Lincoln State Park on a restored 1890s open-air streetcar that ran along Fourth Street in Bismarck in the 1920s. Take a self-guided tour of Fort Abraham Lincoln State Park and a docent led tour of General George (of Custer's Last Stand fame) and Libbie Custer's home at the park; a period reproduction built on the site of the original house. Custer and his wife lived here from 1873 until 1876 and spent time on the hill behind the house enjoying each other's company. About 500 troops were also stationed here. You can explore the rich history of the area at the Visitor Center Museum to gain



insights into the lives of the Mandan Tribe who once lived at On-a-Slant Village in earth lodges. Seven other fort buildings include the barracks, the fort's makeshift theater, a stable building, and several blockhouses. The Commissary Bookstore houses a large collection books about Custer and the history of Fort Abraham Lincoln. 4480 Fort Lincoln Rd, Mandan ND 58554, 701-667-6340 Board the trolley @ 1989 3rd Street SE, Mandan, ND 58554 \$9 Round Trip, Spring weekends only, Daily from June 14<sup>th</sup>.

## **Five Nation Arts**

Native Artists United Guild is a women-owned Native Cooperative formed by local artists who have revitalized Native American art and economy. They do business as the Five Nations Art store, supporting the livelihood of Native artists by gifting knowledge, building capacity and showcasing Native art.

401 West Main Street, Mandan, ND 58554, 701-516-7284, M-F Noon-5PM



# Standing Rock Native American Scenic Byway In the Shadow of Legends

35 Miles

3 Days/2 Nights

Gateway City: Bismarck/Mandan  
North Dakota

## Chief Looking's Village

For the best view in Bismarck, visit Chief Looking's Village overlooking the Missouri River. Take the interpretive trail which reveals the story of North Dakota's first citizens and relax for a bit on a bench in Sonali's Memory Garden. In Pioneer Park, just below Chief Looking's Village, you can walk, run, bike or skate on beautiful trails next to the Missouri River. 2023 Burnt Boat Drive, Bismarck, ND 58503, 701-222-6455  
Daily 6AM- 10PM



## Missouri Valley Legacy Trail

If there's time, walk the Missouri Valley Legacy Trail to view a collection of public art pieces that celebrate the Lewis and Clark Bicentennial. Thunderbirds @ Keelboat Park, 1605 River Road; Gathering of Visions@ Sertoma Park, 300 Riverside Park Road; Reflections@ Steamboat Park, 1970 River Road; Rising Eagle@Pioneer Park, 1500 River Road; The Keeper@ Sertoma Park, 300 Riverside Park Road.

# Standing Rock Native American Scenic Byway In the Shadow of Legends

35 Miles

3 Days/2 Nights

Gateway City: Bismarck/Mandan



## Destination Accommodations

**Raddison Bismarck**, 605 East Broadway Avenue, Bismarck, ND 58501 701-255-6000

The closest hotel to the North Dakota State Capitol, the Radisson Hotel Bismarck is ideally placed so you can walk to restaurants and landmarks right in town. The hotel has an indoor pool, fitness center and beauty salon and each room features a spacious desk, coffeemaker, easy chair and flat screen TV. Breakfast is available through room service or at the restaurant.

**Fort Abraham Lincoln State Park Cabins & Tipis**, 4480 Fort Lincoln Road, Mandan, ND 58554, 701-667-6340, To add a level of authenticity to your stay and an amazing view of the mighty Missouri, consider booking at Fort Abraham Lincoln State Park, in a cabin or tipi. The cabins are air-conditioned and sleep five with one queen bed and 3 single beds, bunkbed style. The 18-foot Heart and Missouri Cheyenne Tipis are arrayed along the riverbank.

# Standing Rock Native American Scenic Byway In the Shadow of Legends

35 Miles

3 Days/2 Nights

Gateway City: Bismarck/Mandan  
North Dakota

## Destination Distinctive Dining

**Peacock Alley**, 422 East Main Avenue, Bismarck, ND 58501, 701-221-BEEF,

The oldest restaurant in North Dakota, featured on the North Dakota Culinary Trail, has been serving guests since 1933. Their unique fine dining menu and perfect dining atmosphere has stood the test of time.

**Terra Nomad**, 514 East Main Avenue, Bismarck, ND 58701, 701-751-2070

It's the intent of unique Terra Nomad, on the North Dakota Culinary Trail, to provide a holistic experience for guests delivering ambience complemented with great food and unique coffees. Enjoy Ham I Am, Sloppy Scones, Le Big Bird, Avocado Toast, Dank Burritos, Smoothie Bowl, We Got the Beets! Happy Hippy Wrap, Daisy Duke, Mona Lisa and more.

**Butterhorn**, 210 East Main Avenue, Bismarck, ND 58501, 701-751-0802

Enjoy Midwestern cuisine, with French and Italian influences, at Butterhorn, featured on the North Dakota Culinary Trail, curated to perfection using showcasing high quality ingredients locally grown right here in the Midwest.

**Pirogue Grill**, 121 North Fourth Street, Bismarck, ND 58501, 701-223-3770

Savor seasonal American cuisine, at Pirogue Grill featured on the North Dakota Culinary Trail, made from local bison, other meats and produce, cooked to perfection and served in a warm, brick-walled space.

## Destination Distinctive Retail

**The Capital Gallery**, 109 North Fourth Street, Bismarck, ND 58502, 701-751-1698

The retail location of the Lewis and Clark Fort Mandan Foundation offers an eclectic blend of traditional and contemporary art. Paintings, sculpture and a variety of work from artists across the country is featured.

**Bismarck Art & Galleries Association**, 422 East Front Avenue, Bismarck, ND, 58504, 701-223-5986

**Art Alley**, Dakota West Arts Council, 1810 Schafer Street Suite 2, Bismarck, ND 58501, 701-222.6640,

**Lacey's Custom Jewelry**, 913 West Interstate Avenue, Suite B, Bismarck, ND 58503 701-214-9649

# Standing Rock Native American Scenic Byway In the Shadow of Legends

35 Miles

3 Days/2 Nights

Gateway City: Bismarck/Mandan

North Dakota

## DAY TWO

### Huff Indian Village State Historic Site

It was about 1450 when the Mandan Tribe established Huff Indian Village, a 12-acre planned community that was home to more than 1,000 people, but only occupied for about 20 years. The community layout is easily seen on the surface where depressions mark the location of more than 100 lodges in rows paralleling the riverbank. Security was ensured with massive fortifications including a 2,000-foot ditch and 10 bastions. The tribe farmed and hunted bison as well producing a large supply of dried corn, beans, and squash.



Roughrider Trail, Huff, ND 58554, 701-328-2666

### Fort Rice State Historic Site

Fort Rice was the first in a chain of forts guarding trade routes on the Northern Plains and ultimately became one of the most important forts on the Upper Missouri River. In 1864 the US Army arrived with 3,500 men to force the Sioux into reservations and enforce in the area. A stockade of cottonwood logs equipped with guard blockhouses surrounded the settlement. The buildings inside were built with cottonwood logs with sod roofs. When six companies of Confederate prisoners who enlisted in the Union Army rather than wait to be paroled or exchanged were posted here, during the first year, 81 men died. Important Native American were held here too including the Great Council with the Sioux. The Sioux later signed the Fort Laramie Treaty defining the boundaries of the Great Sioux Reservation. Depressions, foundation lines, and WPA corner markers still exist and a brief history of the fort and a map appear on a site marker. Roughrider Trail, Huff, ND 58554, 701-328-2666

# Standing Rock Native American Scenic Byway In the Shadow of Legends

35 Miles

3 Days/2 Nights

Gateway City: Bismarck/Mandan

North Dakota

## Cannon Ball

This town on the Standing Rock Indian Reservation was developed at the confluence of the Cannonball River and Lake Oahe of the Missouri River. President Barack Obama and First Lady Michelle Obama made a historic visit in 2014 meeting with young and Mandan people at Cannonball Elementary School before attending the tribe's annual Flag Day Celebration.

## Historic Cannonball Ranch

R.M. Johnson, who established a ranch here in 1860, was one of the first European settlers on the Cannonball River. As early as 1865, the ranch was a gathering point for travelers, served by two houses, a barn, blacksmith shop, bunk-house, icehouse, laundry and tennis court. At one point, the Parkin home had 24 rooms.

Ultimately the ranch included a hotel, a general store, a ferry crossing, a steamboat landing and fueling station, a military telegraph station and a stage line.

The general store doubled as a telephone switchboard for Fort Yates and Mandan, a post office and the area polling place. Morton County, about 35 miles south of Mandan on Highway 1806



## Fort Yates

The Standing Rock Native American Nation was living in the Fort Yates area long before Lewis and Clark arrived, living in earth lodges on the Hill That Stands Alone. Lewis and Clark introduced them to tipis and horses for transport. Fort Yates was established 70 years later to oversee the Hunkpapa Lakota, the Sicasu Blackfeet Lakota, and the Pabaska Ihanktowana Cuthead Band of the Upper Yanktonai at one time housed Chief Sitting Bull.

# Standing Rock Native American Scenic Byway In the Shadow of Legends

35 Miles

3 Days/2 Nights

Gateway City: Bismarck/Mandan  
North Dakota

## **Sitting Bull Visitor Center**

Located on the hill behind Sitting Bull College, the Visitor Center introduces you to the story of the Chief and his interactions in the region. The gift shop sells authentic work by Native American artisans and delivers a panoramic view of the Missouri River.

9296 Highway 24, Fort Yates, ND 58538, 701-854-8125, M-F 8AM to 4:30PM

## **Sitting Bull Burial Site State Historic Site**

This location marks the original burial ground of Chief Sitting Bull who was killed in 1890 and originally buried here. The grave site is covered by a concrete slab, bronze plaque, and large rock. The actual remains of Sitting Bull were retrieved by his family in 1953 and re-interred in Mobridge, South Dakota. 300 Yates Street, Fort Yates, ND 58538, 701-854-3698 701-854-8500



# Standing Rock Native American Scenic Byway In the Shadow of Legends

35 Miles  
3 Days/2 Nights  
Gateway City: Bismarck/Mandan  
North Dakota



## Destination Distinctive Accommodations

**Prairie Knights Casino** 7932 Highway 24, Fort Yates ND 58538, 701-854-7777 or 800-425-8277 Located right in Fort Yates, the Lodge at Prairie Knights Casino has 200 guest rooms and access to the pool with 129-foot water slide, hot tub, small kids' splash area, fitness room, guest laundry and arcade. Suites have vaulted ceilings, a sitting room with a 46-inch HDTV, table, desk, bath with double sinks, separate shower, whirlpool tub and king beds.

## Destination Distinctive Dining

### **Prairie Knights Casino Restaurants**

For an easy dinner, enjoy the Hunters Club which offers top-of-the-line fine dining, Feast of the Rock with an all-you-can-eat buffet or the Prairie Bar and the Tatanka Bar which offers a late-night menu.

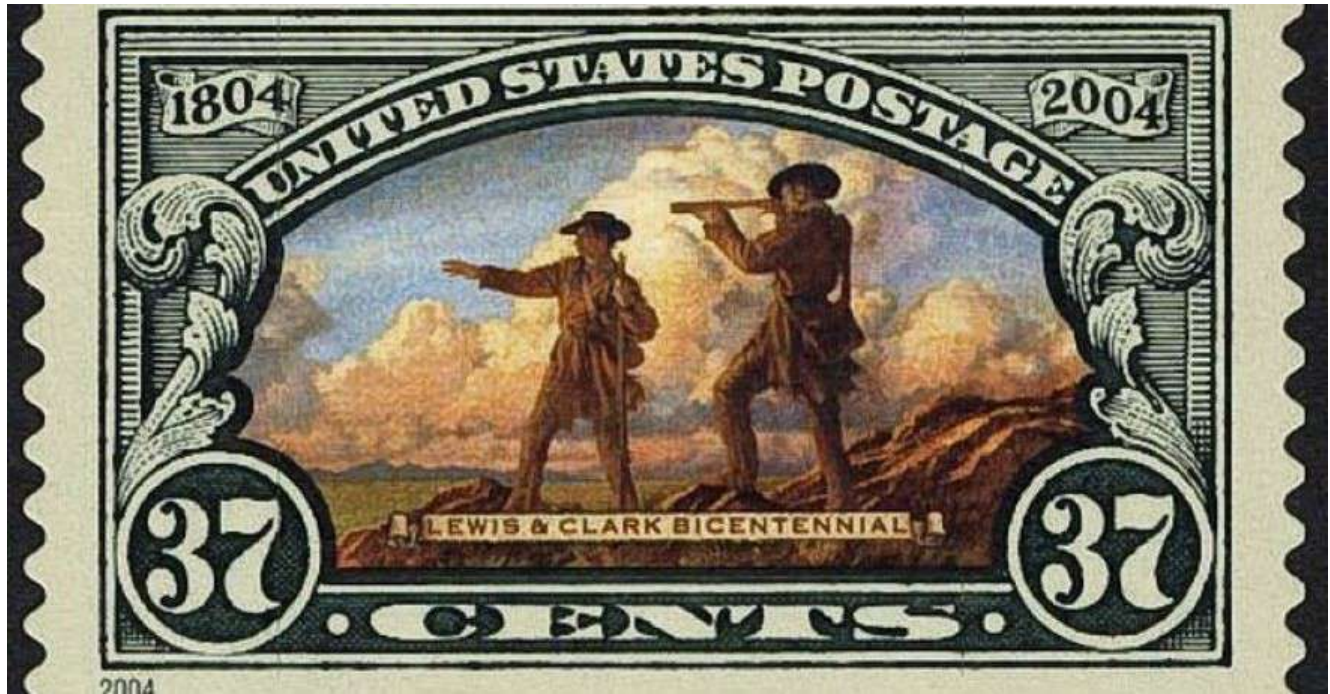
# Standing Rock Native American Scenic Byway In the Shadow of Legends

35 Miles  
3 Days/2 Nights  
Gateway City: Bismarck/Mandan  
North Dakota

## DAY THREE

### The Lewis and Clark Legacy Trail @ Prairie Knights Casino & Resort Marina

The Prairie Knights Casino and Resort features three one mile primitive nature trails overlooking beautiful Lake Oahe that identify traditional plants and their Native American uses. 7932 ND-24, Fort Yates, ND 58538, 701-854-7777,





# Standing Rock Native American Scenic Byway In the Shadow of Legends

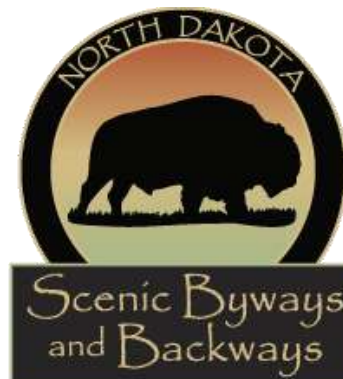
35 Miles

3 Days/2 Nights

Gateway City: Bismarck/Mandan

North Dakota

Development of this itinerary was sponsored by the North Dakota Tourism Division, in conjunction with National Scenic Byway Foundation and National Travel Center.



**National Travel Center**

