

Bitterroot Valley Scenic Drive

Where Montana Began



5 Days/4 Nights

Gateway City: Missoula, Montana



This is an old and venerable place. Returning to the traditional home of the Salish, an elder speaks: “When we go home, we think about our people and walk lightly. We return to the Bitterroot each year to honor our connection to our homeland and to ensure the preservation of our sacred sites. We acknowledge the gifts left here by those who have gone on before us and the way of life sustained for generations by our ancestors’ prayers.” The Bitterroot is, indeed, the ancient home of Native Americans. It was also explored by Lewis and Clark, trodden by Hudson Bay fur traders, and location of the oldest occupied town in Montana. Even with this early activity, the intermountain areas of western Montana were the last to be settled by Europeans. Today, much of the Bitterroot Valley Scenic Byway parallels the 1.6-million-acre Bitterroot National Forest, the largest expanse of continuous pristine wilderness in the Continental US, including the Selway-Bitterroot, the Frank Church River of No Return, and the Anaconda-Pintler. The beautiful Bitterroot Valley itself, is named after the small pink blossoms and succulent roots of the Montana state flower. It is nestled between two mountain ranges, the Bitterroots, with heavily-glaciated rugged peaks that punctuate the forest, and the Sapphires, which make the climate here more moderate than the rest of the state. The river parallels the road for most of the distance between Missoula to the Idaho state line.



Touring the Byway

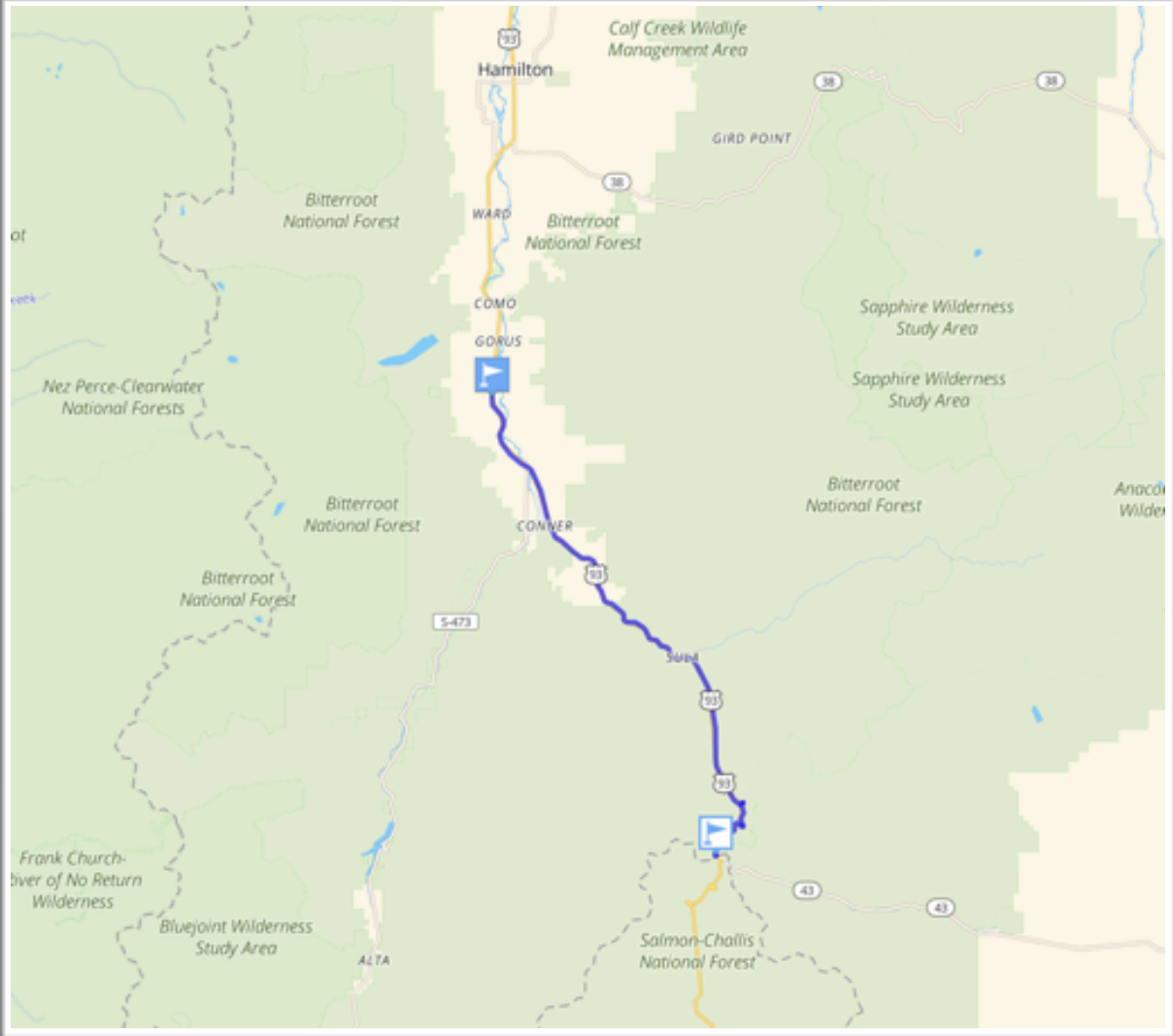
We recommend starting your journey in Missoula where you can learn about the city on the Historic Walking Tour, visit the Montana Natural Historic Center, the Montana Museum of Arts and Culture, the Historical Museum at Fort Missoula, built when America was focused on westward expansion, and take the Riverfront Walking Trail, before staying at the Blue Mountain Bed and Breakfast.

On Day Two, you'll be heading out on the Bitterroot Valley Scenic Drive with a stop in Lolo to explore Travelers' Rest State Park before moving on to Stevensville where you'll find the Lee Metcalf National Wildlife Refuge and Whaley Homestead, Historic St. Mary's Mission, and the Stevensville Historical Museum. Spend the night at the Bitterroot River Bed and Breakfast. The next day, take time to visit Fort Owen State Park, named after the U.S. Army Major who arrived in the Bitterroot Valley in 1850, before leaving for Victor and the Victor Heritage Museum, Corvallis, and Hamilton, where you can explore the Ravalli County Museum, the Daly Museum, built by one of the Copper Kings, and stay at the Bitterroot River Inn right on the river. On Day Four, see the Darby Pioneer

Memorial Museum, the Historic Darby Ranger Station Visitor’s Center and Museum, and Painted Rocks State Park, before ending the day in Butte, another unique Montana city where you can learn about the mining heritage of the region.

Take the Trolley Tour to learn about Butte and visit the Carle Gallery and Clark Chateau Museum and Gallery before wrapping up your trip at the World Museum of Mining, where you can explore more than 50 structures from an original mine. A stay at the Copper Kings Mansion lets you experience the luxury that turn of the century Montana Copper Kings enjoyed.

From there, we wish you safe passage if you’re traveling another Montana Scenic Drive, or a safe and pleasant journey home.



DAY ONE



Missoula

C. P. Higgins and Francis Worden opened a trading post on the Blackfoot River in 1869 that was followed by the arrival of the Mullan Road connecting Fort Benton with Walla Walla, Washington. Fort Missoula was opened in 1877 to protect the growing community. The arrival of the railroad in 1883, along with the Missoula Mercantile Company, made the city a trading center. The University of Montana opened in 1895. Missoula's location within a heavily forested area made logging the mainstay industry until the mid-1970s. Saws could be heard over two miles away on a clear summer night.

Downtown Missoula Historic and Art Walking Tour

Learn more about Missoula, on the downtown walking tour, which has one of the largest collections of buildings listed on the National Register of Historic Places in the country. Locations like the Atlantic Hotel and the Diner Café, with huge historic neon signs, that have long been repurposed, peacefully coexist with the 1910 Missoula County Courthouse and the 1909 Palace Hotel. The downtown partnership has funded over 20 works of public art, that appear along the path.

Montana Natural History Center

The Montana Natural History Center features displays of the flora and fauna, ecosystems, and geology in the state, including the Montana Ecosystem, The Magic Planet, a Naturalist Forest Station, Glacial Lake Missoula, Explore Fossils, Explore Geology, and the outdoor Nature Adventure Garden.

120 Hickory Street, Suite A, Missoula, MT 59801, 406-327-0405, T-F 9AM-5PM, Sat Noon-4PM, Adults \$4

Montana Museum of Art and Culture

Located on the University of Montana campus, this museum now has 11,000 pieces including work by Rocky Mountain artists, historic European works, plus collections from Southeast Asia, American Impressionists, contemporary Native American artists, ceramics, and public art sites across the campus. European masters include Rembrandt, Delacroix, Boucher, Piranesi, and Daumier, along with 20th century artists, Miro, Toulouse-Lautrec, Chagall, Dali, Picasso, Remington, Merritt Chase, and Andy Warhol.

Across from the Adams Center off East 6th Street. University of Montana Campus. 406-243-2019. Tu-Sat Noon-6PM. Free, donations accepted.

Historical Museum at Fort Missoula

Fort Missoula was established by the US Army in 1877 to protect settlers in the region. Nearly 100 years later, the Historical Museum encompasses 32 acres with over 20 historic structures and a collection of nearly 50,000 artifacts.

3400 Captain Rawn Way, Missoula, MT 59804, 406-728-3476 M-Sat 10AM-5PM, Sun Noon-5PM

Riverfront Walking Trail

The riverfront walking trail along the Clark Fork River takes you past McCormick Park, the Old Milwaukee Depot, John H. Toole Park, and other scenic and historic treasures in Missoula.



Destination Distinctive Accommodations

Blue Mountain Bed and Breakfast 6980 Deadman Gulch Road, Missoula, MT 59804, 406-203-3187 The gardens here frame breathtaking views of the Bitterroot River. Elegant breakfasts go along with the Inn's lovely décor. Guest rooms have private baths with jetted tubs, air conditioning and amenities, plus Wifi.

Destination Distinctive Dining

Catalyst Café 111 North Higgins Avenue, Missoula, MT, 59802, 406-542-1337
American cuisine café.

Scotty's Table 131 South Higgins Avenue, Unit P3, Missoula, MT 59802, 406-549-2790 Fine dining in Missoula.

Tamarack Brewing Company 231 Front Street West, Missoula, MT 59802, 406-830-3113
American pub and bar, vegetarian and vegan options.

Destination Distinctive Retail

Missoula Art Galleries

The Artists' Shop 127 North Higgins, Missoula, MT 59801, 406-543-6393
Missoula's premiere co-op fine craft gallery. M-F 10AM-6PM, Sat-Sun 10AM-5PM

Dana Gallery 246 North Higgins Avenue, **Murphy-Jubb Fine Art** 210 North Higgins Avenue, Suite 300, **Radius Gallery** 114 East Main Street and **The Art Hang-up** 839 South Higgins Avenue

Lake Missoula Tea Company 136 East Broadway, Missoula, MT, 59801, 406-926-1038 Teas from around the world, including blends made in small batches.

Hometana 312 North Higgins Avenue, Missoula, MT 59801, 406-224-4166

Ducrey Chocolate Maker 311 East Front Street, Missoula, MT 59801, 406-218-7396

DAY TWO

Lolo

Lolo appears to have received its name from Lt. John Mullan, who Governor Stevens chose to explore a new railroad route from the Mississippi River to the northwest coast, somewhere between the 47th and 49th parallels. He wrote down the areas as the "Lo-Lo Fork," or "Lo-Lo's fork." The healing waters of Lolo Hot Springs made Travelers' Rest Creek an ideal spot to stop, rest, hunt, and repair gear before tackling the trip over the pass.

Travelers' Rest State Park

Located a mile south of Lolo, Traveler's Rest was twice a stopping point for the Lewis and Clark Expedition. Centuries prior to that, this site had long been used by the Salish, Pend d'Oreille, and Nez Perce peoples. Today, Native American storytellers bring their history, culture, and society to life. Be sure to take the self-guided interpretive trail.

6717 US Highway 12. Lolo, MT 59804, 406-273-4253 May 1-Aug 1, 9AM-6PM, \$8 per vehicle



Stevensville

Stevensville, the oldest town in Montana, founded in 1841, saw firsts including a sawmill, church, school, county seat, the first planted grain, ground flour, milled lumber, planted fruit trees and irrigation system. Having weathered both boom and bust in agriculture, mining, and the timber industry, Stevensville has managed to retain the simplicity and charm of its rural roots, while hosting art galleries, museums, antique stores, restaurants and other amenities.

Lee Metcalf National Wildlife Refuge

The 2,800-acre National Wildlife Refuge hosts a diverse representation of native Montana wildlife, with 250 species of birds, 37 species of mammals, and 17 species of reptiles and amphibians. The Refuge is also home to the Whaley Homestead, the home of an Irish immigrant who came to Montana in the 1860s to look for gold, but instead served as the first agent on the Flathead Reservation. The 1885 house survives as an outstanding example of vernacular frontier architecture. Weatherboard siding now conceals a massive, complicated structure of square-hewn logs.

4567 Wild Fowl Lane, Stevensville, MT 59870, 406-777-5552





Historic St. Mary's Mission

Historic St. Mary's Mission was established by Fr. Pierre De Smet, a Jesuit priest, in 1841. Today, the town has the distinct honor of being the place “Where Montana Began.” The well-preserved buildings and artifacts afford you a look at the beginnings of frontier Montana and a lovely chapel, still in use.

315 Charlos Street, Stevensville, MT 59870, 406-777-5734 Tu-F 10AM-5PM

Stevensville Historical Museum

More exhibits here illustrate Stevensville as the first European settlement in Montana, including artifacts left behind by the Salish when Fr. DeSmet arrived. 517 Main Street, Stevensville, MT 59870, 406-777-1007 Memorial Day-Labor Day, W-Sat 11AM to 4PM



Destination Distinctive Accommodations

Bitterroot River Bed and Breakfast 501 South Avenue, Stevensville, MT 59870, 406-777-5205 Originally built as a private home, the B&B offers a tranquil country setting surrounded by a hobby farm with sheep, chickens, and ducks that overlooks the river, yet is a very short walk into town.

Destination Distinctive Dining

Mission Bistro 225 Main Street, Stevensville, MT 59870 406-777-6945
Northwest cuisine with a touch of French inspiration.

The Catered Table 205 Main Street, Stevensville, MT 59870, 406-777-7090
A fine dining experience specializing in seafood, certified Angus beef, and pasta.

Montana Distillery 304 Main Street, Stevensville, MT 59870, 406-370-5189, Tu-Sat 3PM-8PM Montana's oldest fully functioning distillery, in business since prohibition, with award-winning vodka and gin produced from Montana sugar beets.

Destination Distinctive Retail

Creamery Antiques Mall 4072 Eastside Highway, Stevensville, MT 59870, 406-777-9961
Explore a selection of dealers housed in the historic Bitterroot Cooperative Creamery.

The Montana Chocolate Company 755 Main Street, Stevensville, MT, 59870, 406-777-0808 Producing more than 150 varieties of hand-dipped chocolate delights.

DAY THREE

Fort Owen State Park

Major John Owen arrived in the Bitterroot Valley in 1850 to establish a fort, trade with the Native Americans, and protect the growing number of immigrants who followed Father DeSmet to the area. Period furnishings and artifacts are displayed in the restored east barracks. Take your time browsing the interpretive signs and exhibits that detail the site's history.

99 Fort Owen Ranch Road, Stevensville, MT 59870. 406-273-4254

Victor

The area around Victor was originally occupied by the Salish tribe and named in honor of one of the tribe's great chiefs. By the end of the 19th century, the town was delivering lumber, agricultural products, and silver to market.

Victor Heritage Museum

Housed in the old Victor Depot Building, this museum includes exhibits featuring mining, the railroad, Native Americans, schools, churches, businesses, ranching, and natural resources.

125 Blake Street, Victor, MT 59875, 406-642-3997, Memorial Day-Labor Day, Tu-Sat 1PM-4PM or by appointment

Corvallis

The name of this quaint community, derived from French for heart and valley, was one of the first settlements in the valley. Today, historic buildings lining the streets include the Protestant Church built in 1881, the 1884 Methodist Church, and the Victorian Brooks Hotel.

Destination Distinctive Dining

Memories Café 1017 Eastside Highway, Corvallis, MT 59828, 406-961-5533

Local café with comfort food.



Hamilton

Incorporated in 1894, Hamilton was named after the railroad officer who platted the town for the Northern Pacific Railway. Early on, the town revolved around the Anaconda Copper Mine at Bitter Root Stock Farm. Most of the residents worked for Copper King Marcus Daly, living in "company" homes and shopping in "company" stores. By the time Daly died in 1900, Hamilton had grown to become the commercial center of the Bitterroot Valley, and the seat of Ravalli County.

Ravalli County Museum

The Museum housed in the 1900 Ravalli County Courthouse designed by the same architect who designed the Daly Mansion, holds artifacts from all periods in the County.

205 Bedford Street, Hamilton, MT, 59840, 406-363-3338, Tu, W, F, 10AM-4PM, Th 10AM-8PM, Sat 9AM-1PM



Destination Distinctive Accommodations

Bitterroot River Inn 139 Bitterroot Plaza Drive, Hamilton, MT 59840, 406-375-2525

Accommodations include a breakfast buffet, pool, hot tub, sauna and fitness center.

Destination Distinctive Dining

Nap's Grill 200 West Main Street, Hamilton, MT 59840, 406-363-0136 American food.

Taste of Paris 109 North Fourth Street, Suite 106, Hamilton, MT 59840, 406-369-5875 Fine dining.

Bitterroot Brewing 101 Marcus Street, Hamilton, MT 59840 406-363-7468

Great brews and awesome burgers.

Destination Distinctive Retail

Montana Bliss Artworks 101 South Seventh Street, Hamilton, MT 59840, 406-381-2488

Works include concrete sculptures, kiln fired glass, blown glass, sgraffito ceramics, custom designed jewelry, clay sculptures, woodwork, paintings, stipple dot art, metalwork, and more.
M, Tu, Th, F, Sat 11AM-3PM,

Big Sky Candy 319 West Main Street, Hamilton, MT 59840, 406-363-0580

DAY FOUR



Daly Mansion

When copper was discovered in the Bitterroot Valley, Copper King Marcus Daly purchased an existing farmhouse and had it completely remodeled by 1889, and again in 1897. When the finished home reminded him of a church, remodeling plans began again, but before that remodel which changed the Queen Anne home into Georgian Revival was complete, Daly had passed away. Today, the residence has over 50 rooms including 25 bedrooms, 15 bathrooms, 7 fireplaces, 5 of which are imported Italian marble, a large living room, music room, formal dining room, sunroom, a trophy room, upstairs sitting room, and third floor billiard hall.

251 Eastside Highway, Hamilton, MT 59840, 406-363-6004, 10:30AM-3PM, Tours on the hour begin at 11AM, with the last tour at 3PM, Adults \$9.

Darby

Officially established in 1889, Darby was named after the gentleman who signed the post office application. Today, this quaint western town supports top resorts in the area, with unique local shopping and dining.

Darby Pioneer Memorial Museum

Darby's Pioneer Memorial Museum is housed in one of the first hand-hewn homestead cabins built by early settler Evelin Matteson in 1886.

101 East Tanner Avenue, Darby, MT 59829, 406-821-3753



Historic Darby Ranger Stations Visitor's Center and Museum

The historic ranger station constructed by the CCC in 1937, stepped in as temporary classrooms when the Darby High School burned in 1972. Today, the National Forest Service Museum includes artifacts, maps, and photographs of the rugged individuals who staffed this "isolated" ranger station and maintained telephone lines, trails, and suppressed fires, in all conditions.

712 North Main Street, Darby, MT 59829, 406-821-3913, M-Sat 8:30AM-4:30PM

Painted Rocks State Park

This park received its name from the green, yellow, and orange lichens that cover the grey and black rock walls of the granite and rhyolite cliffs.

8809 West Fork Road, Darby, MT 59829, 406-542-5500

Destination Distinctive Dining

The Blue Joint 119 North Main Street, Darby, MT, 406-821-0023 Good American café for lunch.

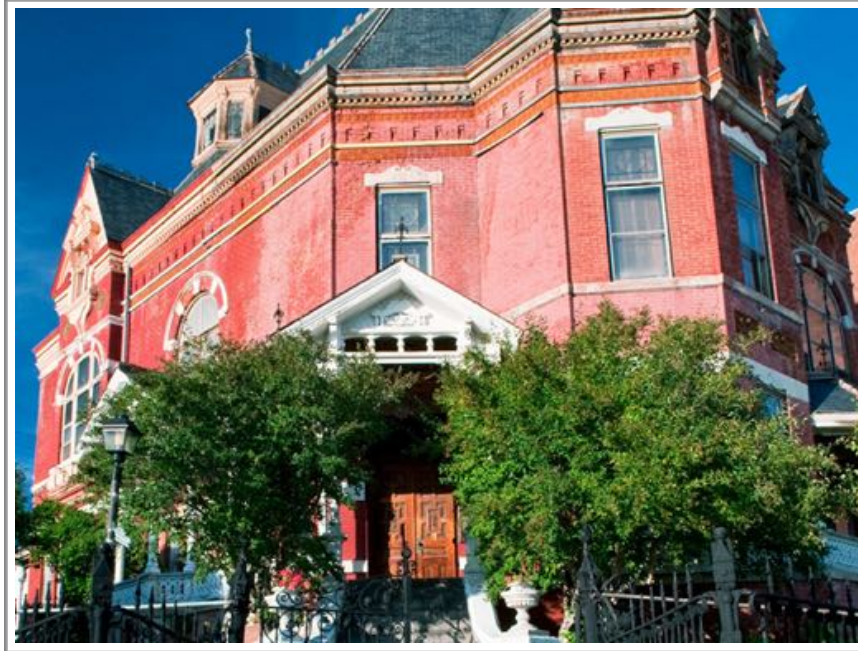
Destination Distinctive Retail

Old West Gallery, Gifts, Antiques and Candy 202 South Main Street, Darby, MT 406-821-4076



Butte

Butte was once the largest city in Montana, and for a time, the largest between Chicago and San Francisco. It began as a mining camp for gold and silver until the massive demand for copper began in the 1890s. By the early 1900s, copper mining was consolidated among three Copper Kings: William A. Clark, Marcus Daly, and F. Augustus Heinze. A combination of their operations resulted in the Anaconda Copper Mining Company. Workers from all over the globe were attracted to mining, creating a unique city with a hardscrabble reputation and a place where anything was possible. The cultures of many ethnic groups can still be found in Butte, primarily in food like Cornish pasties, Slavic povidica, and Scandinavian lefse.



Destination Distinctive Accommodations

Copper King Mansion 219 West Granite Street, Butte, MT, 59701, 406-782-7580 Before checking into your accommodations, be sure to take a tour of the Copper Kings Mansion which reveals the history of this 34-room Romanesque Revival Victorian residence. After law school, William Clark grubstaked a gold mine in Colorado before heading to Bannock in southern Montana, to stake a claim. When he decided he was better at helping miners manage their claims than being a miner, he bought a team to haul supplies to mining camps, recorded miners claims, and made loans, which generated an income of \$17 million a month. In addition to serving as a U.S. Senator, Clark owned newspapers, mines, sugar plantations, and oil wells, as well as the Clark Wire Company in New Jersey, and the Henry Bonnard Bronze Company in New York. He even financed the railroad through Montana and established a ranch in Nevada to help miners and railroad workers recover in the dry desert climate. To better negotiate when collecting European art, he learned French and German. A wing was added to the Corcoran Art Gallery in Washington, DC to house his collection.

Destination Distinctive Dining

Uptown Café, 47 East Broadway Street, Butte, MT 59701, 406-723-4735

White-tablecloth restaurant serving Continental cuisine at dinner and more relaxed fare for lunch.

Casagranda's Steakhouse 801 Utah Avenue, Butte, MT 59701, 406-723-4141

Varied fare, from steak to pasta to sushi, plus beer and wine, served in a warehouse built in 1900.

Destination Distinctive Retail

Butte Silver Bow Arts Foundation 113 Hamilton Street, Butte, MT 59701, 406-479-4979

Butte Copper Company 2125 Harrison Avenue, Butte, MT 59701, 406-494-207

DAY FIVE

Butte Trolley Tour

Experience Butte on a 2-hour trolley tour offered by the Butte-Silver Bow Chamber of Commerce. Local experts who narrate the city's rich and colorful history, take you through the National Historic Landmark District, home to Copper King Mansion, Dumas Brothel, World Museum of Mining, Berkeley Pit Viewing Stand, Mai Wah Museum, Clark Chateau, Montana Tech, and much, much more. 1000 George Street, Butte, MT 59701, 800-735-6814, Daily, Memorial Day-Labor Day, Adults \$20.

Carle Gallery

The Carle Gallery is a tribute to John Carle, whose murals and paintings depict Butte's historic buildings and people. In order to support local artists, the gallery has expanded to include the work of regional artists.

226 West Broadway Street, Butte, MT 59701, 406-723-3361, M, F, and Sat, 9AM-5PM, Tu, W, and Th, 9AM-7PM



Clark Chateau Museum and Gallery

The Clark Chateau, built for the oldest son of the Copper King, features exhibits that span the Copper Kings, Opera Singers, Music Schools, Senators, and Fez Clubs, in addition to information about the influential families who lived in the residence over the years.

321 West Broadway Street, Butte, MT 59701 406-565-5600, Th-Sun, Noon-4PM, Adults \$7



World Museum of Mining

The World Museum of Mining lets you experience a mining camp and mine yard once known as Hell Roarin' Gulch. Over 50 exhibit buildings, countless artifacts, and 66 primary exhibits in the mine yard reveal the story of the Gulch and the Orphan Girl Mine, which you can tour underground. You can almost see the blackened faces and hear the exhausted sighs at the end of the day.

155 Museum Way, Butte, MT 59701, 406-723-7211, Daily April 1-Oct 30, 9:30AM-5:30PM, Adults \$9, Underground Mine Tour, Adults \$21