

Salmon River Scenic Byway

Explore the Wild Side of Idaho



7 Days/6 Nights

Gateway City: Missoula, Montana



Over 200 years ago, intrepid explorers Lewis and Clark stood nearly 7,000 feet atop a peak in what is now the Salmon River Valley. Home to the Shoshone and Bannock tribes who habited this area for thousands of years, the jagged mountains that spread before them shimmered in the sunlight and stretched on for miles. Today, this spectacular view remains largely unchanged, is the perfect starting point for a scenic drive alongside the mighty Salmon River. From panoramic vistas of the iconic Sawtooth Mountains to white sand beaches on craggy river bluffs, the Salmon River Scenic Byway winds 161 miles through pristine forests, past sparkling glacial lakes, and beneath towering mountains that turn kaleidoscopic at sunset. Learn the story of Central Idaho as you trace its history from Native Americans and early explorers to the trappers, miners, and pioneer homesteaders. Discover a world where mountain goats and sheep feed on steep hillsides and float trips, fishing, rock climbing, and bird watching are daily activities. And at the end of the day, slip into a bubbling natural hot spring and gaze into an endlessly starry sky. Thrilling nature, epic scenery, and fascinating history are waiting for you to explore the wild side of Idaho on the Salmon River Scenic Byway.



TOURING THE BYWAY

We recommend starting your journey in Missoula where you can learn about the city's rich history and culture on a [Historic Walking Tour](#) and at the [Montana Natural Historic Center](#), the [Montana Museum of Arts and Culture](#), and the [Historical Museum at Fort Missoula](#), built in 1877 when America was focused on westward expansion, before staying at the [Blue Mountain Bed and Breakfast](#).

On Day Two, drive a bonus byway named after the small pink blossoms and succulent roots of the Montana state flower. The [Bitterroot Valley Scenic Byway](#) takes you deep into the heart of the [Bitterroot National Forest](#) with stops at [Lost Trail Pass](#) and [North Fork](#), two locations that played a pivotal role in [Lewis and Clark's famous expedition](#). The history lesson continues in [Salmon](#) at the [Lemhi County Historic Museum](#) and the [Sacajawea Interpretive and Cultural Center](#) and ends with a stay in a picturesque log cabin lodge. Day Three brings you to [Challis](#), where a walking tour takes you past dozens of buildings on the [National Register of Historic Places](#) before a scenic drive on the [Custer Motorway Adventure Road](#),

a backcountry route used by old mining supply trains. Afterwards, curl up with a cup of tea in a historic bed and breakfast.

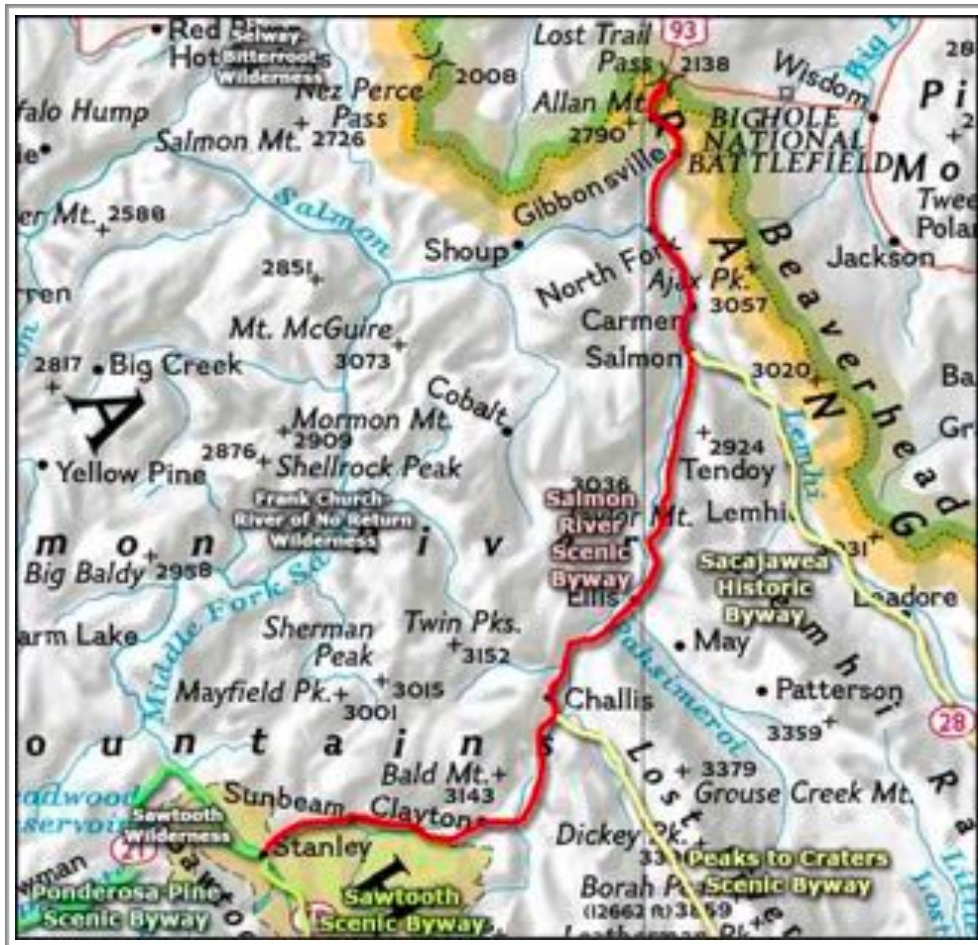
You're in for a real treat on Day Four! Expect timbered corridors, beautiful rivers, alpine vistas, and fresh mountain air as you twist and turn your way through the Salmon-Challis National Forest on your way to Stanley, a tiny town with big scenery. Get a glimpse of life on a not-so-gentle landscape at the Stanley Historical Museum, enjoy panoramic views of the iconic Sawtooth Mountains at Stanley Pioneer Park, and discover the lakes and trails of the Sawtooth National Recreation Center, one of the West's most breathtaking natural expanses. Relax in a natural hot spring before tucking into a rustic lodge on the banks of the Salmon River.

Get your sunglasses ready as you travel to Ketchum and the surrounding Sun Valley region on Day Five, because the bright blue skies and towering mountain peaks that first attracted celebrities in the 1930's are still shining bright today. As home to some of the best ski mountains in the world, this area is a haven for anyone looking to take a deep breath of fresh air and reconnect with nature – hiking, biking, and rock climbing are daily activities for people in Ketchum, and opportunities for both winter and summer entertainment abound. Your hotel for the evening is the historic Sun Valley Lodge, the country's first destination ski lodge and where Ernest Hemingway penned his famous *For Whom the Bell Tolls*.



You'll want your binoculars once you get to Hailey on Day Six, first to spot the stamped tin ceilings that still exist in many buildings in the city's Historic District, then to see how many of the 100 species of birds you can find at the Draper Wood River Preserve. Day Seven brings you to Bellevue, once a major center of Idaho's powerhouse mining industry, and Shoshone, a geologically fascinating city that sits atop a series of underground volcanic lava tubes. See the homes and neighborhood shops that use the lava rock as building material on a Historic Walking Tour, then grab a jacket to get a firsthand look at Idaho's Mammoth Cave, the Shoshone Ice Caves, and Black Magic Canyon. A stop in Jerome on your way to Twin Falls on Day Eight allows you to reflect on history at the Minidoka National Historic Site and the Jerome County Historic Museum.

From there, we wish you a safe passage if you're continuing your journey on another Idaho Scenic Byway, or a safe and pleasant journey home.



DAY ONE



Missoula

C. P. Higgins and Francis Worden opened a trading post on the Blackfoot River in 1869, followed by the arrival of the Mullan Road that connected Fort Benton with Walla Walla, Washington, and the area has continued to grow. Fort Missoula was opened in 1877 to protect the growing community. The arrival of the railroad in 1883, along with the Missoula Mercantile Company, made it a trading center. The University of Montana opened in 1895. In spite of all this activity, the location of Missoula within a heavily forested area made logging the mainstay industry until the mid-1970s. Saws could be heard over two miles away on a clear summer night.

Downtown Missoula Historic and Art Walking Tour

Learn more about Missoula, which has one of the largest collections of buildings listed on the National Register of Historic Places, on a downtown walking tour. Historic billboards still stand and locations like the Atlantic Hotel and the Diner Café that have long been repurposed peacefully coexist with the 1910 Missoula County Courthouse and the 1909 Palace Hotel. The downtown partnership has also funded over 20 works of public art on display, which appear on your path.

Montana Natural History Center

The Montana Natural History Center features displays of the flora and fauna, ecosystems, and geology in the state, including the Montana Ecosystem, The Magic Planet, a Naturalist Forest Station, Glacial Lake Missoula, Explore Fossils, Explore Geology, and the outdoor Nature Adventure Garden.

120 Hickory Street, Suite A, Missoula, MT 59801, 406-327-0405, T-F 9AM-5PM, Sat Noon-4PM, Adults \$4.

Montana Museum of Art and Culture

Located on the University of Montana campus, this museum now has 11,000 pieces which include works from artists from the Rocky Mountain west and historic European works, along with collections from Southeast Asia, American Impressionists, contemporary Native American artists, ceramics, and public art sites across the campus. European masters represented include Rembrandt, Delacroix, Boucher, Piranesi, and Daumier, along with 20th century artists Miro, Toulouse-Lautrec, Chagall, Dali, Picasso, Remington, Merritt Chase, and Andy Warhol.

Across from the Adams Center off East 6th Street. University of Montana Campus. 406-243-2019. Tu-Sat Noon-6PM. Free, donations accepted.





Historical Museum at Fort Missoula

Fort Missoula was established by the US Army in 1877 to protect settlers in the region. Nearly 100 years later, the Historical Museum was established on the 32 acres with over 20 historic structures and a collection of nearly 50,000 artifacts. 3400 Captain Rawn Way, Missoula, MT 59804, 406-728-3476 M-Sat 10AM-5PM, Sun Noon-5PM.

Riverfront Walking Trail

The riverfront walking trail along the Clark Fork River takes you past McCormick Park, the Old Milwaukee Depot, John H. Toole Park, and other scenic treasures in Missoula.



Destination Distinctive Accommodations

Blue Mountain Bed and Breakfast 6980 Deadman Gulch Road, Missoula, MT 59804, 406-203-3187 The gardens here frame breathtaking views of the Bitterroot River. Elegant breakfasts go along with the Inn's lovely décor, luxury, and comfort. Guest rooms have private baths with jetted tubs, air conditioning and amenities, plus Wifi.

Destination Distinctive Dining

Catalyst Café 111 North Higgins Avenue, Missoula, MT, 59802, 406-542-1337
American cuisine café.

Scotty's Table 131 South Higgins Avenue, Unit P3, Missoula, MT 59802, 406-549-2790 Fine dining in Missoula.

Tamarack Brewing Company 231 Front Street West, Missoula, MT 59802, 406-830-3113
American pub and bar, vegetarian and vegan options.

Destination Distinctive Retail

Missoula Art Galleries

The Artists' Shop 127 North Higgins, Missoula, MT 59801, 406-543-6393
Missoula's premiere co-op fine craft gallery located in the heart of downtown. M-F 10AM-6PM, Sat-Sun 10AM-5PM.

Dana Gallery 246 North Higgins Avenue, **Murphy-Jubb Fine Art** 210 North Higgins Avenue, Suite 300, **Radius Gallery** 114 East Main Street and **The Art Hang-up** 839 South Higgins Avenue.

Lake Missoula Tea Company 136 East Broadway, Missoula, MT, 59801, 406-926-1038 Teas from around the world, including blends made in small batches.

Hometana 312 North Higgins Avenue, Missoula, MT 59801, 406-224-4166

Ducrey Chocolate Maker 311 East Front Street, Missoula, MT 59801, 406-218-7396.

DAY TWO

Lost Trail Pass Visitor Information Center

After traveling through what is now the state of Idaho, the Lewis and Clark expedition reached Montana very near the site of the Lost Trail Pass, which sits at an elevation of 7,014 feet. Interpretive signs explain the historical trails in the area, but the dramatic view from the top of the pass remains strikingly similar to what the explorers first saw. Restrooms are available at the Information Center. US-93, Milepost 350.8.



North Fork

This small village in northeast Idaho sits at the confluence of the Salmon River's North Fork and main branch, where it makes a near-right turn to begin flowing westward. This area also played host to the Lewis and Clark expedition, though the river's rapids and steep gorge walls forced the party to pause their trip and proceed northwards, rather than west into Montana as they had originally planned.



Salmon

When Lewis and Clark crossed the Continental Divide in 1805, they entered Idaho's Salmon Valley and received essential supplies and information from Sacajawea and the AgaiDika Shoshone community. Nearly 50 years later, essential ore discoveries sent a rush of settlers to the area, which helped spur a thriving mining, lumbering, and family ranching industry. Today, the city is a gateway to world-class float trips on the Salmon River and visitors of all kinds flock to the region for its outdoor recreation and stunning mountain views.

Lemhi County Historic Museum

Celebrating those who have lived in the area since the late 1800's, the museum features clothing, beadwork, arrowheads, ceremonial accessories, and photographs showcasing the lives of the Shoshone tribe. Exhibits also feature Salmon's early mining history, and the museum partners with Gilmore Mercantile and the Fred and Thelma Ramey Salmon Grange Museum.

210 Main Street, Salmon, ID 83467, 208-756-3342 June-mid Oct M-Sa 11AM-3PM, mid Oct-May Tu-W 11AM-3PM, Adults \$2.

Sacajawea Interpretive and Cultural Center

Paying homage to one of America's greatest historical heroines, this educational and cultural center celebrates Sacajawea's role in the Lewis and Clark expedition. Born around 1788 in the Salmon Valley, she traveled with the team as an interpreter and served as an indication of peaceful intent. Center exhibits highlight her historic trek and the Agaidika Shoshone-Bannock perspective, as well as deepen connections between Western frontier life and the natural environment. Walking trails and a presentation in the Meriwether Theater are also available. 2700 Main Street, Salmon, ID 83467, 208-756-1188 Summer hours Tu-F 10AM-4PM, Adults \$5, Family \$12.





Destination Distinctive Accommodations

Syringa Lodge Bed and Breakfast 13 Gott Lane, Salmon, ID 83467, 208-756-4424 Located on a bluff overlooking the town and river, this lodge built of large spruce logs provides unobstructed panoramic views of the surrounding mountains.

Destination Distinctive Dining

Odd Fellows Bakery 510 Main Street, Salmon, ID 83467, 208-756-1122 Featuring sourdough bread baked in a wood-fired oven along with pastries, pizzas, and coffee.

Junkyard Bistro 405 Main Street, Salmon, ID 83467, 208-756-2466 Family-friendly restaurant serving American cuisine and a large beer and wine menu.

Shady Nook Restaurant & Lounge 501 Riverfront Drive, Salmon, ID 83467, 208-756-4182 Pub fare in a family-friendly environment, serving sandwiches, burgers, pastas, and steak.

Destination Distinctive Shopping

Salmon Valley Handmade Market 800 Main Street, Salmon, ID 83467, 208-756-2505 Unique and handmade gifts by local artisans.

DAY THREE



Challis

After gold was discovered in 1873, Challis was named after surveyor A.P. Challis and established as a stop-over and freight drop before a road was built into the nearby Yankee Fork Mining District. By 1896, shepherding had replaced mining as the major industry and the area was embroiled in the open range sheep and cattle wars of the West. The mining camps eventually became ghost towns but Challis flourished, evolving into the ideal base camp for exploring the vast 3 million acres of Custer County.

North Custer Museum and Challis Historic District Walking Tour

The history of Challis and the surrounding North Custer County region is beautifully displayed in rotating and permanent exhibits at the museum. Items on view include photographs and artifacts of the city and the area's mining experience. Then, discover perfect examples of typical mining-town architecture on a walking tour of the Old Challis Historic District and Challis Brewery Historic District. Many of the original buildings built in the 1870's are listed on the National Register of Historic Places, and you will be able to see structures like Butcher's Meat Market, Custer County Jail, Challis High School, and the Challis brewery, established in 1879 and built by stone masons from Germany and Prussia. 1211 S Main Street, Challis, ID 83226, 208-879-2846 Open June-Oct, hours vary. Walking tour begins at the North Custer Historical Museum.

Challis Hot Springs

Soothe those aching muscles! Continuously replenished with freshwater from the river rocks below, these natural and odorless hot springs are the perfect place to relax and replenish. The largest of the two pools on site is nearly 100 feet across with temperatures ranging from 96-100 degrees, while the smaller pool is maintained at 105 degrees.

5025 Hot Springs Road, Challis, ID 83226, 208-879-4442 Summer hours: Daily 8AM-9PM, Winter hours may vary.





Land of the Yankee Fork State Park and Interpretive Center

Named because everyone in the mining camp was originally a Yankee, the Yankee Fork Mining District was organized after gold was discovered near the Salmon River in 1870. The General Custer Mine was discovered in 1876, but by 1910 the Bonanza, Custer, and Bayhorse camps were all but deserted. These ghost towns are now on view, along with museum exhibits, a gold panning station, educational programming, and friendly personnel to help illustrate the mining heritage of the area. The grounds also feature a 1/4-mile trail detailing the archeological finds of the nearby Challis Bison Jump Site.

24424 State Highway 75, Challis, ID 83226, 208-879-5244 Park open daily 7AM-10PM, \$7 per vehicle.

Custer Motorway Adventure Road

If time allows, explore the old Custer Motorway route used by the mining supply trains that delivered gold bullion to Challis. This 2-hour side trip is an exciting backcountry scenic driving experience that illustrates the harsh life of the West. Discover old mining equipment, several stagecoach stations, deteriorating log cabins, and weathered grave markers along a remote stretch of land.

Begin your trip at the Land of the Yankee Fork Interpretive Center. The driving loop is 98 miles long, with 46 miles of dirt/gravel road and no services.





Destination Distinctive Accommodations

Tea Cup Cafe and Bakery Bed and Breakfast 200 Main Street, Challis, ID 83226, 208-879-5050.

Two bedroom, two bath apartment located right on Main Street in Challis. Enjoy the patio and gazebo sipping your espresso or morning coffee, surrounded by beautiful mountain views. Enjoy a light or hearty breakfast.

Destination Distinctive Dining

Village Inn 310 US-93, Challis, ID 83226, 208-879-2239

X-Inn Cafe 1200 Main Street, Challis, ID 83226 208-879-4426

Challis Lodge and Lounge 1220 East Main Street, Challis, ID 82336 208-879-2251

River of No Return Brewing Company 8105 Highway 93, Challis, ID 82336, 208-879-7667

DAY FOUR



Stanley

With an average of over 200 sunny days each year, it's no wonder that Stanley is a haven for outdoor sports and adventures of all types! From hiking and biking to rock climbing and river rafting throughout the Sawtooth National Forest, this tiny town offers big scenery. Stanley is also surrounded by dozens of renowned hot springs that bubble up from the Idaho Batholith, a granite formation fractured by faults.

Sawtooth-Stanley Chamber of Commerce & Visitor Center

Housed in the Stanley Community Building, stop in here for assistance in planning your visit to area attractions and to learn more about this beautiful little town. Completed in 1983, the building illustrates how community groups worked together to build a facility to serve nonprofit groups. It currently includes the Stanley Chamber of Commerce office, library, City Hall, and assembly hall. 510 Eva Falls Avenue, Stanley, ID 83278, 208-774-3411 June-Oct 15: Open daily, Oct 16-May: Hours vary.

Stanley Historical Museum

Located in a historic 1933 Valley Creek Ranger Station, exhibits of this museum showcase artifacts and photographs from the early pioneer days in the Sawtooth Valley. Highlights include an ice house/cold cellar, a tool shed, a historic replica of the “Clerks Cabin” staff house, and other items that offer a glimpse into life on a not-so-gentle landscape.

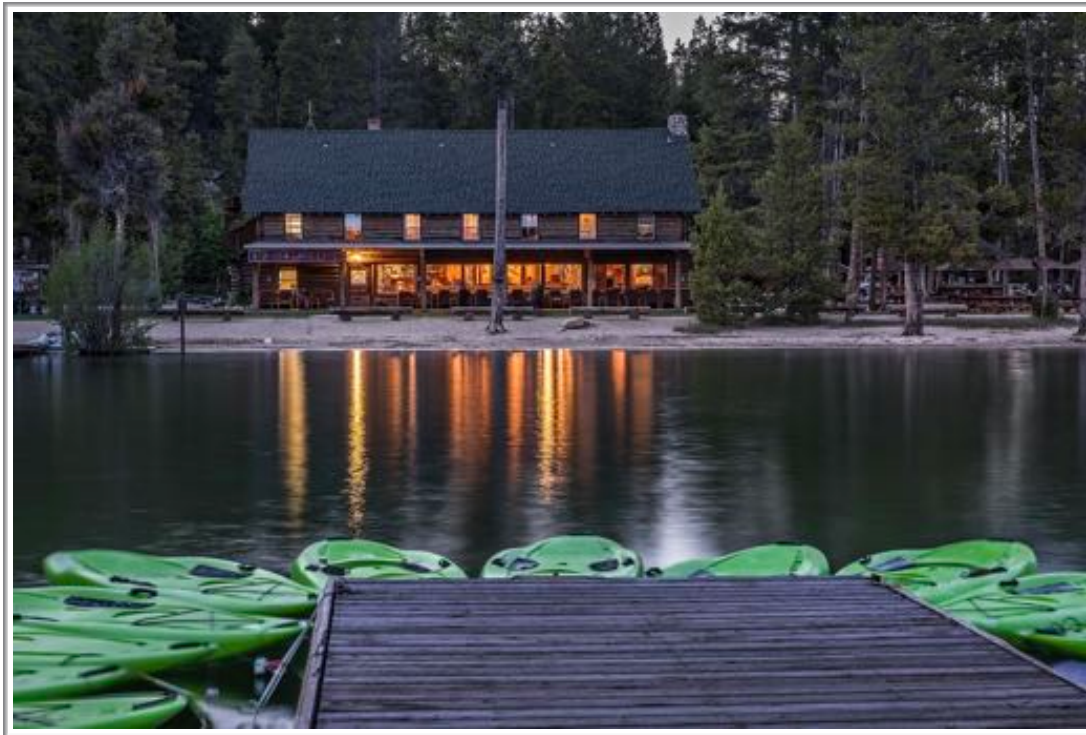
State Highway 75, Stanley, ID 83278 208-774-3517 June-Sept 11AM-5PM.

Sawtooth National Recreation Area - Stanley Ranger Station

With 756,000 acres of pristine mountain landscape, the Sawtooth National Recreation Area is one of the West’s most breathtaking scenic expanses. The headwaters of four major rivers, over 700 miles of trails, 40 peaks rising over 10,000 feet, and over 300 high-mountain alpine lakes beckon adventure enthusiasts of all types. Popular activities within the recreation area include hiking, backpacking, rock climbing, kayaking and whitewater rafting, mountain biking, and wildlife viewing. The Stanley Ranger Station is the recreation area’s best entrance point for those staying near Stanley. Visitors can easily access numerous trails and lakes as well as obtain information, area maps, and a narrative automobile tour highlighting the area’s history and most impressive sights.

Stanley Ranger Station located on FR-433, approximately 3.4 miles south of Stanley on ID-75, 208-774-3000, M-F 8:30AM-5P.





Destination Distinctive Accommodations

Redfish Lake Lodge, 401 Redfish Lake Road, Stanley, ID 83278, 208-774-3536

Built in 1929, Redfish Lake Lodge sits on 16 acres of the Sawtooth National Forest. Other than a couple of thoughtful renovations, the authentic environment remains much the same as it was back in 1929.

Destination Distinctive Dining

Limbert's Enjoy dinner at the Redfish Lake Lodge

River of No Return Brewing Company 8105 Highway 93, Challis, ID 82336,
208-879-7667

Stanley Baking Co. & Cafe 250 Wall Street, Stanley, ID 83278, 208-774-6573 All-day breakfast, lunch, and legendary homemade baked goods.

Mountain Village Restaurant 220 Eva Falls Avenue, Stanley, ID 83278, 208-774-3661

Classic American fare for breakfast, lunch, and dinner in a rustic dining room or on the outside patio.

Destination Distinctive Shopping

Sawtooth Spirit 440 Eva Falls Avenue, Stanley, ID 83278, 208-774-3420 Get a taste of mountain life with unique gifts like apparel, craft beer, regional wines, and artisanal food items.

Redfish Lake Lodge General Store 401 Redfish Lodge Road, Stanley, ID 83278,
208-774-3536 Find the perfect vacation souvenir like clothing, curios, maps, postcards, and more.

DAY FIVE



Ketchum

Originally named Leadville in 1880, the postal department determined that was too common of a name and renamed the town after David Ketchum, a local trapper and guide. After a brief but thriving mining industry, Ketchum's rich soil and high elevation allowed the area to become the largest sheep-shipping center in the West, but in 1936, the development of the Union Pacific Railroad in next door Sun Valley helped establish the city as the country's first destination ski resort. The region soon became a popular and tony celebrity hangout, with people like Ernest Hemingway, Gary Cooper, Clark Gable, Lucille Ball, and Marilyn Monroe taking frequent extended holidays to relax and rejuvenate underneath a bright blue sky. With nearly endless outdoor adventure activities and nearby Bald Mountain, one of the best ski mountains in the world, the surrounding Wood River Valley draws everyone from snow bunnies to adrenaline-junkies to those simply looking for a breath of fresh alpine air.

Sawtooth Botanical Garden

Connecting people to southern Idaho's unique beauty, this community garden fosters environmental conservation through education, displays, and plant collections. Gardens on view include a wildflower garden, serenity garden, Garden of Infinite Compassion, a pet memory garden, and plots representing the five distinct biomes of the region like sagebrush steppe, lava rock, and alpine.

11 Gimlet Road, Ketchum, ID 83340 208-726-9358 June-Sept: Daily 9AM-5PM, Adults \$5, Oct-May: M-F 10AM-4PM, Donations welcome.

Sun Valley Museum of Art

As the oldest arts organization in the Wood River Valley, this museum believes that a community needs art and culture to be both vital and sustainable. Rotating gallery exhibits showcase a wide variety of artistic media and techniques, and programming includes lectures, workshops, a professional artist residency, and partnerships with local schools.

191 5th Street East, Ketchum, ID 83340, 208-726-9491 Tu-F 10AM-5PM, Sa 11AM-4PM.

Ore Wagon Museum and Historic Bonning Cabin

Built larger than the average freight wagon to withstand extreme stress and weight, the Lewis Ore Wagons or the "Big Hitch" as they were known, are one of a kind. Every year, they roll down Main Street during the annual Wagon Day Parade, and spend the rest of the year in this small but fascinating museum. The Bonning Cabin, the 1912 home of Russel and Gladys Obenchain Bonning, was one of the first wooden structures built in Ketchum.

500 East Avenue, Ketchum, ID 83340, 208-726-7820



Destination Distinctive Accommodations

Sun Valley Lodge 1 Sun Valley Road, Sun Valley, ID 83353, 800-786-8259 Part of the larger Sun Valley Mountain Resort, this legendary hotel was the country's first destination ski lodge and has been recently updated to feature larger rooms, a spa, fitness center, and yoga studio, three pools, golf courses, tennis courts, and over a dozen restaurants and bars.

Destination Distinctive Dining

Lefty's Bar & Grill 231 6th Street East, Ketchum, ID 83340, 208-726-2744 Serving pub grub and craft beers on tap in a casual setting for the past 30 years.

Sawtooth Club 231 Main Street South, Ketchum, ID 83340, 208-726-5233 A rustic bar serving craft cocktails and mesquite-grilled steakhouse classics.

Ketchum Grill 520 East Avenue, Ketchum, ID 83340, 208-726-4660 Offering local, seasonal fare cooked over a wood fire and an extensive wine list in a romantic and sophisticated dining room.

Destination Distinctive Shopping

Sun Valley Signatures & Gift Shop 1 Sun Valley Road, Sun Valley, ID 83353, 208-622-2206 Unique gifts including vintage giclee reproductions and stunning local photography.

Gilman Contemporary 661 Sun Valley Road, Ketchum, ID 83340, 208-726-7585 Features painting, photography, and mixed media art in a contemporary setting.

Gail Severn Gallery 400 1st Avenue North, Ketchum, ID 83340, 208-726-5079 Representing mid-career and established artists for over 35 years, this gallery houses 4 distinct exhibition spaces and a 2-acre sculpture garden.

DAY SIX



Shoshone

Surrounded by lava fields and farmland irrigated via a system of man-made canals, Shoshone was planned in anticipation of the Union Pacific Railroad and thanks to the four sets of railroad tracks that ran through the center of the business district, once boasted the largest Main Street in the world. The nearby lava fields are composed of underground lava tubes that remain frozen throughout the summer and in the days before refrigeration, made Shoshone a popular place to get “the only cold beer within hundreds of miles.” Today, those same lava fields provide the rock used in many of the town’s homes, businesses, and churches, whether they are the large mansions of sheep barons and railroad officials or the more modest homes of farmers and small businessmen.

Shoshone Historic Walking Tour

A self-guided walking tour of historic buildings includes the Lincoln County Courthouse, W.H. Baugh Opera House, C.F. Borden Home, The Governor’s Mansion, United Methodist Church, and Soloaga Basque Boarding House. Brochures are available at the Shoshone Chamber of Commerce Visitor Center. 102 South Rail Street East, Shoshone, ID 83352, 208-886-9811 Daily 10AM-5:30PM.

Idaho's Mammoth Cave & Shoshone Bird Museum of Natural History

Discover one of the largest volcanic caves in the world open to the public! Millions of years ago, a volcanic eruption filled the valley with a river of molten lava that got blocked off at its head and left a hollow tube in its wake. A rare and stunning lava cave was formed, which provided shelter and a food preservation system for Native Americans and later, U.S. Government supply storage during the Cold War. A self-guided tour of the caves takes about 30 minutes and requires 1/4 mile walking out and back. Lanterns will be provided, a light jacket and additional flashlight is suggested. The adjacent museum hosts the surprisingly large collection of Richard Arthur Olsen, an eccentric hunter, history lover, and outdoorsman. Featuring animal and bird mounts, long-forgotten fossils, and artifacts of ancient people, most of the mounted animals on view were taxidermied by Olsen himself. 251 West Thorn Creek Street, Shoshone, ID 83352, 208-329-5382 May 1-Oct 1 Daily 9AM-6PM, Oct 1-Nov 1 Fr-Su 9AM-6PM, Adults \$12.

Shoshone Ice Caves

Escape the heat on a guided tour of one of Idaho's largest known lava ice caves. A gradual descent along a well-lit historic path takes you 100 feet underneath lava and up close and personal with a 1700-foot ice cave. Temperatures can range from 23-33 degrees Fahrenheit year round, and a jacket is recommended. A rock and artifact museum, picnic area, gift shop, and statues for photo-ops are also on site. 1561 State Highway 75, Shoshone, ID 83352, 208-886-2058 May and Sept: Daily 10AM-6PM, June-Aug: Daily 9AM-7PM, Adults \$12.





Destination Distinctive Accommodations

Governor's Mansion Bed and Breakfast 315 S Greenwood Street, Shoshone, ID 83352, 208-886-2858 This historic home was one of several original Gooding family homes in Shoshone and now serves as a restored visitor attraction and bed and breakfast.

Destination Distinctive Dining

Manhattan Cafe 133 S Rail Street West, Shoshone, ID 83352, 208-886-2142 Small town diner with friendly staff, delicious homemade food, and a comfortable vibe.

The Burrito Lady 103 N Greenwood Street #5194, Shoshone, ID 83352, 208-944-0816 Casual spot for delicious Mexican fare.

Destination Distinctive Shopping

Second Time Around Antique Mall 102 South Rail Street, East Shoshone, Idaho 83352 208-886-7787 Offering antiques, collectibles, and other unique items from over 25 vendors inside an historic JCPenny Department Store.

DAY SEVEN

Jerome

Surrounded by beautiful farmland and towering purple mountains, Jerome was established in 1907 by the Kuhn Brothers as part of the North Side Twin Falls Canal Company. During World War II, the county was home to Minidoka, the largest of the West's ten Japanese American relocation and holding centers. Today, the town offers history museums, a farmer's market, and access to nearby lava rock structures and other outdoor recreational activities of the surrounding Twin Falls area.



Minidoka National Historic Site

As wartime hysteria mounted after the attack on Pearl Harbor, President Roosevelt forced more than 120,000 persons of Japanese ancestry to leave their homes, jobs, and lives and relocate to internment camps. Minidoka commemorates the more than 13,000 Japanese Americans who were imprisoned here. When it closed, the land was divided into small farms and given to returning white veterans through a lottery system. The 1.6-mile walking trail and interpretive signs document the history and invite reflection, and the Visitor Center features a film and interactive exhibits.

1428 Hunt Road Jerome, ID 83338, 208-825-4169, Park is open daily sunrise-sunset, Visitor Center hours vary by season.

Destination Distinctive Dining

Choate's Family Diner 400 W Main Street, Jerome, ID 83338, 208-324-4642 Local mainstay serving all meals from breakfast to dessert alongside a kid's menu.

Garibaldi's 801 S Lincoln Avenue, Jerome, ID 83338, 208-644-9218 Popular restaurant offering an extensive selection of Mexican dishes.

Twin Falls

Even before the Shoshone and Bannock tribes called this area home, prehistoric people lived in the area for thousands upon thousands of years, as evidenced by arrowheads and other items discovered here. By the middle of the 19th century, settlers were arriving by stagecoach and dry land farmers had come to stay. Yet, it wasn't until I.B. Perrine founded the Twin Falls Land and Water Company that the valley began thriving, using a series of canals that transformed the desert into the rich agricultural area that exists today. The town was named for the nearby waterfall cascading over a broad series of rocks which, during World War II, also hosted a relocation camp for Japanese Americans that held more than 10,000 detainees. Today, residents from Bosnia and Herzegovina, Russia and many Latin countries add a unique flair to the city.



Centennial Waterfront Park

Here, you will find breathtaking views of the I.B. Perrine Bridge, and Perrine Coulee Falls.

Pillar Falls is about 1.5 miles upstream headed towards Shoshone Falls. Auger Falls Heritage Park features a historical homesite and gold mining remnants. Nearby, Shoshone Falls dubbed “the Niagara of the West,” at 212 feet tall and 900 feet wide is one of the largest natural waterfalls in the United States that surpasses the height of Niagara Falls.

Park is open Dawn to Dusk, Shoshone Falls is located at 4155 Shoshone Falls Grade Road, Dawn to Dusk, March 1-Sept 30 \$5 per car