

# Haines Highway - Golden Circle Route

*North America's Most Spectacular Drive*



7 Days/6 Nights

Gateway City: Juneau, Alaska



For centuries, a wild, single road in the Alaskan Panhandle was shared by two species – the majestic eagle, who uses the fertile river valley to roost and feed on spawning salmon, and the First Nations peoples, who traversed the route trading fish oils with other communities in the Yukon. Then in the late 1800’s, the road became a packhorse trail serving miners during the Klondike Gold Rush and a wagon route for delivering ore from nearby copper mines a few decades later. In the 1940s, the United States Army established the road as an official highway for military access during World War II. Today, this road is known as the Haines Highway, a National Scenic Byway that runs 150 miles from the Inside Passage community of Haines, Alaska, where it’s known as the Valley of the Eagles, to Haines Junction, in Canada’s Yukon Territory. To drive the Haines Highway is to experience firsthand a unique ecosystem that seamlessly blends the route’s fascinating history with the abundant natural resources that surround it. Watch the peaceful countryside turn from shimmering fjords and lush coastal rain forests to rocky alpine tundra as you rise above the tree line and discover the powerful seclusion of a seemingly endless stretch of open road. Cross international borders as you climb mountain passes into Canada and travel in the footsteps of dynamic First Nations cultures and intrepid explorers who came before you. Heed the call of the last Frontier, for this is a land of breathtaking scenery. From glacier-lined roads to jagged mountain peaks silhouetted against a midnight sun, the Haines Highway delivers a classic, authentic Alaskan landscape experience.



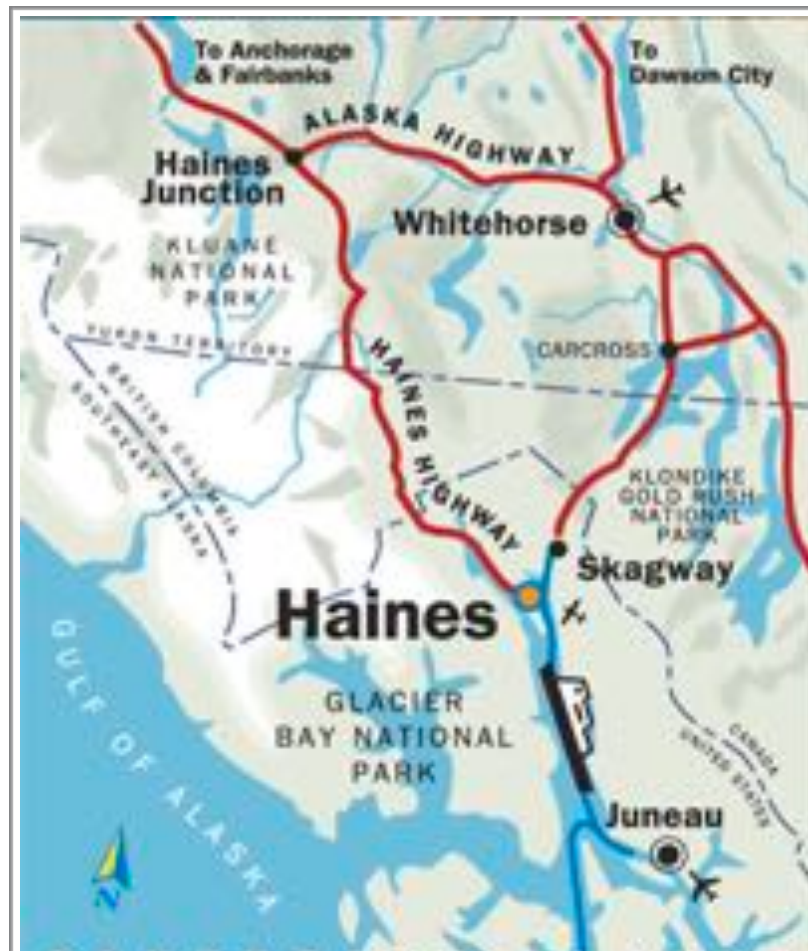
### **Touring the Byway**

We recommend starting your journey in Juneau, where you can learn about the state's history at the Alaska State Museum, soar through a lush rainforest to the top of a mountain on the Mount Roberts Tramway, and peer out over the breathtaking Mendenhall Glacier before staying at the historic Silverbow Inn. Enjoy the view on Day Two as a small plane takes you over the bay to Haines. Hear about Tlingit culture at the Haines Sheldon Museum, spot a feathered friend at the American Bald Eagle Foundation, and pick out your favorite tool at the Hammer Museum, home to the world's largest hammer collection.

Get ready for the road trip adventure of a lifetime on Day Three – you're driving the Haines Highway! This stunning scenic byway takes you 148 miles into the Canadian Yukon and showcases some of the most dramatic scenery in the Northwest. The road is open year-round, but check weather conditions if you're heading out between September and June. There are few services offered between Haines and Haines Junction, so make sure you have enough gas and supplies for the journey. In the evening, relax in an outdoor hot tub at the Mount Logan EcoLodge, a luxury hotel at the base of Kluane National Park.

Get a breath of fresh glacier air at Kluane National Park on Day Four and hear the stories of the First Nations People at the Da Ku Cultural Centre before driving east to Whitehorse, the capital of the Yukon. On Day Five, learn the history of the Kwanlin Dün First Nation, hear stories of the life changing Klondike Gold Rush, and visit a refurbished sternwheeler in Whitehorse. Arriving in Carcross, take the Historic Walking Tour and a visit the Caribou Crossing Trading Post. In the evening, curl up with a cup of tea in Skagway's Historic Inn.

On Day Six, see what life was like for the intrepid and hopeful prospectors at the Klondike Gold Rush National Historical Park and travel back in time in a vintage passenger coach on the White Pass & Yukon Route Railway before taking the Alaska Marine Highway Ferry back to Haines. The 4.5 hour journey through the longest and deepest fjord in North America, with waterfalls and hanging glaciers (plus possible whales, orcas, and more) is well worth the trip. From there, we wish you a safe passage if you're continuing your journey on another Alaska Scenic Byway, or a safe and pleasant journey home.



## DAY ONE



### **Juneau**

Named in 1881 after Joe Juneau, a gold prospector from Quebec, the city of Juneau is Alaska's state capital that was once called Harrisburg after Juneau's co-pro prospector, Richard Harris. As the only United States capital on an international border, the city's northern location and extreme rugged terrain defines much of its character since no roads connect Juneau to the rest of North America. All goods or people must arrive or leave by boat or plane, but the sweeping views of the Gastineau Channel and surrounding mountains, which soar 4,000 feet into the bright blue sky, will make the trip well worth it.

### **Alaska State Museum**

This extensive museum strives to represent the diverse cultures and rich historical record of the vast geographical area known today as the state of Alaska. Exhibit of rotating solo artists are featured, along with a permanent collection that includes cultural artifacts from Alaska's indigenous people, the state's Russian colonial eras, and the state's political, natural, and industrial history.

395 Whittier Street, Juneau, AK 99801, 907-465-2901 Tu-Sa 10AM-4PM, Adults \$14

### **Juneau-Douglas City Museum**

Housed in the Veterans Memorial Building, the site of the 1959 Alaska Statehood Ceremony listed on the National Register of Historic Places, preserves materials that raise awareness of Juneau's cultural heritage and history. Alongside a local featured artist series, permanent exhibits include displays on the city's mining history, a scale relief model of Juneau, and a celebration of the Tlingit, Juneau's first people.

114 West Fourth Street, Juneau, AK 99801, 907-586-3572 Tu-Sa 10AM-4PM.

### **Mount Roberts Tramway**

Soar to new heights with the Mount Roberts Tramway! In just five minutes, you'll rise 1,800 feet from sea level through lush rainforest to the midpoint of Mount Roberts all while safely tucked into an aerial tramway car. Along with stunning panoramic views of downtown Juneau and the Gastineau Channel, you'll also find a restaurant, nature center, retail shops, and hiking trails once you reach the end of the tram.

490 South Franklin Street, Juneau, AK 99801, 888-461-8726 M-Sa 10AM-5PM, Adults \$33.

### **Mendenhall Glacier and Visitor Center**

The Mendenhall Glacier is part of the Juneau Ice Field, a 1,500-square mile remnant of the last Ice Age. While walking on the actual glacier is best left to those with extreme outdoor adventure skills, the Mendenhall Glacier Visitor Center overlooking the Mendenhall Valley provides an excellent introduction to the environmental and ecological history of the area. Get a gorgeous view of the 13-mile long river of ice that terminates at the far side of Mendenhall Lake, and of course, try to spot an iceberg or two floating alongside Alaska's southeast coast. Trails of varying distance and challenge level bring you up close and personal to cascading waterfalls, a verdant rainforest, a proglacial lake, and possibly even black bears, bald eagles, and schools of salmon rushing upstream. You'll also find U.S. Forest Service Rangers on hand to answer any questions, as well as exhibits, a film about the Tongass National Forest, and a bookstore.

6000 Glacier Spur Road, Juneau, AK 99801, 907-789-0097 May-September: Daily 8AM-7:30PM. October-April: F-Su 10AM-4PM. Adult day pass \$5.



### **Destination Distinctive Accommodations**

**Silverbow Inn** 120 Second Street, Juneau, AK 99801, 907-586-4146 Homey rooms in a historic 1914 building in the heart of downtown Juneau, come with a full breakfast, all-day coffee, rooftop deck, and an on-site bakery and restaurant.

### **Destination Distinctive Dining**

**Red Dog Saloon** 278 South Franklin Street, Juneau, AK 99801, 907-463-3658 A world-famous saloon with swinging doors and a sawdust floor provides hospitality, fellowship, and entertainment to weary travelers and local patrons alike. Burgers, pizzas, and local beers on tap.

**Sandpiper Café** 429 West Willoughby Avenue, Juneau, AK 99801, 907-586-3150 All-day breakfast, lunch, and a kid's menu in an open and contemporary space.

**The Hangar on the Wharf** 2 Marine Way, Suite 106, Juneau, AK 99801, 907-586-5018 Alaska's premier waterfront restaurant serving fresh seafood, hand-cut steaks, burgers, salads, and 100 different beers alongside breathtaking views.

### **Destination Distinctive Retail**

**Trove** 497 South Franklin Street, Juneau, AK 99801, 907-586-9530 Offering a wide variety of clothing, accessories, jewelry, kitchenware, home decor, and more.

**Caribou Crossings** 387 South Franklin Street, Juneau, AK 99801, 907-586-5008 Locally owned store featuring handmade original creations by over 60 Alaskan artists.

**Annie Kail's** 124 Seward Street, Juneau, AK 99801, 907-586-2880 Alaskan artwork, handmade pottery, stoneware, glassware, local jewelry, and much more.

## DAY TWO



### **Haines**

Native Americans named Haines, Deishu, or “end of the trail,” fitting for the southern terminus of the Haines Highway, which leads northwest to the Canadian border. In the late 1800’s, the border between the United States and Canada was vaguely defined and often disputed. Yet, when the Klondike Gold Rush of 1896-1899 turned Haines into a supply center that offered a route to the Yukon, the need to establish a boundary increased, with an official one declared in 1903. Today, the area is known for its superb outdoor adventure activities like hiking, rafting, fishing, and wildlife viewing, blending outdoor fun with Alaska’s fascinating history, scenic beauty, and frontier lifestyle.

### **Haines Sheldon Museum and Cultural Center**

The exhibits at this nationally accredited museum allow you to discover the rich history, culture, and art of Haines and the surrounding Chilkat Valley and to learn how the former Tlingit stronghold transformed into a booming and diverse community. Highlights of the museum’s collection include thousands of artifacts like Chilkat Blankets and the Eldred Rock lighthouse lens, 19th century photographs, mining company ledgers, ship’s logs, and other research documents. 11 Main Street, Haines, AK 99827, 907-766-2366 W-Sa 10AM-4PM, Adults \$10.



## **Hammer Museum**

The world's largest hammer collection arrived here when a local blacksmith's collection of hand tools grew too large for his home. So, he transformed a 100-year old building into the first museum dedicated to preserving the history of the hammer. From an Egyptian dolerite ball to a Tlingit warrior's pick and a stove top lifter to a dulcimer mallet, over 2,000 artifacts from their large collection are on display at all times.

108 Main Street, Haines, AK 99827, 907-766-2374 May-Sept M-F 10AM-5PM, Sa-Su 10AM-2PM, Adults \$5.

## **American Bald Eagle Foundation**

Haines is home to the largest concentration of bald eagles in the world. The American Bald Eagle Foundation seeks to protect and preserve these majestic birds and their fragile habitats through education and stewardship. The natural history museum and raptor center showcases over 200 specimens from all over Southeast Alaska with interpretive wildlife displays and other educational programming, to make a connection between guests and the natural world.

113 Haines Highway, Haines, AK 99827, 907-766-3094, May-Sept M-F 8AM-5PM, Sat-Sun 10AM-3PM Adults \$15.



## **Fort William H. Seward National Historic Landmark**

While the reasons behind the Army's 1902 decision to build a post near Haines remain unclear, Fort William H. Seward is named after the man who negotiated the purchase of Alaska from Russia in 1867 and became a symbol of the Army's strength in the northern territory. The Fort housed two large barracks with a fire hall, guardhouse, Post Exchange, icehouse, telegraph office and officer's houses complete with flush toilets, and 90 other buildings including a hospital and vegetable gardens, with many having been repurposed. Stroll through the six-acre Parade Ground where morning muster and evening taps were held.

4-6 Ft Seward Drive, Haines, AK 99827.





### **Destination Distinctive Accommodations**

**Hotel Halsingland** 13 Fort Seward Drive, Haines, AK 99827, 907-766-2000 Located in historic Fort Seward and designed in Jeffersonian-style architecture, this informal hotel offers relaxed rooms, continental breakfast, parking, bar, library, and garden.

### **Destination Distinctive Dining**

**Rusty Compass Coffeehouse** 116 Main Street, Haines, AK 99827, 907-766-2770 Speciality coffees, fresh-baked goods, breakfast and lunch items, and ice cream.

**Alpenglow** 214 Main Street, Haines, AK 99827, 907-766-3312 Delicious wood-fired pizzas, fresh salads, and other appetizers in a beautiful downtown location.

### **Destination Distinctive Retail**

**Ampersand** 221 Main Street, Haines, AK 99827, 907-766-3031 An art gallery and gift shop featuring over 40 Alaskan and Yukon artists and makers.

**Uniquely Alaskan Arts** 09-115 Second Avenue, Haines, AK 99827, 907-766-3525 A large and stunning gallery featuring eclectic works by Tresham Gregg and other local artists.

**Orca Arts and Crafts** 57 Beach Road, Haines, AK 99827, 907-766-2741 Unique gifts, souvenirs, handcrafted items, snacks, and more.

## DAY THREE



### **Drive the Haines Highway!**

You'll soon agree this scenic drive is one for the memory books. Keep an eye out for mile and kilometer markers as you make your way.

**Mile 8.3:** Alaska Chilkat Bald Eagle Preserve – High numbers of bald eagles roam this preserve from early October through late February.

**Miles 18-24:** Prime eagle viewing and considered critical preserve habitat.

**Mile 21.5:** Klukwan and the Jilkaat Kwaan Cultural Heritage Center – This tiny village preserves the language, rituals, stories, and oral histories of the Chilkat Tlingits. Items on display include several artifacts returned to Klukwan through the Native American Graves and Repatriation Act, along with other works of art and historically significant pieces.

May-Sept 15 M-F 10AM-4PM, Sa 12PM-4PM, Adults \$15.

**Mile 23.8:** Chilkat River Bridge — a good area to spot moose!

**Mile 27.2:** Mosquito Lake State Recreation Site — a lake with a dock, picnic shelter, and campsites, accessed via the 2.7-mile road to the left.

**Mile 33.1:** 33 Mile Roadhouse — Convenience store, gas station, and restaurant serving breakfast, lunch, and dinner. W-M 10AM-7PM.

You'll pass U.S. Customs, Dalton Cache Station at Mile 40.2, but there is no need to stop as you are heading into Canada. When you reach Canada Customs, Pleasant Camp at Mile 40.6, you'll need your passport or passport card. Also note that you'll be entering the BC/Yukon time zone, which is one hour later than Alaska; mile markers are now in kilometers.

**Km 87.3:** Mile 48 Post — interpretive signs about the Haines Highway and your first views of the Three Guardsmen, dramatic mountains that rise over 10,000km high.

**Km 91.2:** Three Guardsmen Lake — this area, known as the Chilkat Pass makes for prime birdwatching – over 82 species of birds have been recorded here.

**Km 102.4:** Haines Summit — at 5,621km, this is the highest point on the Haines Highway.

**Km 108:** The Green Shack — a survival shelter built and maintained by users and volunteers. Don't forget to sign the guest book!

**Km 158.7:** A 0.8km road leads to the Million Dollar Falls campground, which offers picnic tables, outhouses, cooking shelters, hiking trails, and a network of boardwalks and observation decks for watching the 60-meter-high Million Dollar Falls plunge into the Takhanne River. Legend has it that when the Haines-to-Fairbanks pipeline was being built in the 1940's, an army maintenance camp near the site "cost a million dollars" to build but was never used.

**Km 185.1:** From here to Haines Junction, the Haines Highway is bordered by the Kluane National Park and Reserve to the west, a UNESCO World Heritage site.

**Km 200.7:** Rock Glacier Trail – a fairly easy 0.8km trail with interpretive signs along the way. Walk from marshland through a spruce and poplar forest to the toe of a rock glacier, which provides expansive views of Dezadeash Lake.

**Km 245:** Dezadeash River Trail - an easy 6km walk along the Dezadeash River Valley with great views of the Auriol Range and helpful interpretive signage along the way.

### **Haines Junction**

Inhabited by the Champagne and Aishihik First Nations, Southern Tutchone people for nearly 2,000 years, this village in the Yukon served as a vital trading route between the coastal Tlingit people and those who resided in the region's interior. The town was officially established in 1942 during the construction of the Alaska Highway that connected Haines, 150 miles to the south. As the gateway to the spectacular wilderness of the Kluane National Park and Reserve, the rugged beauty and vast landscape of Haines Junction inspires, excites, and invites a deep appreciation for the natural environment.





### **Destination Distinctive Accommodations**

**Mount Logan EcoLodge** 103084 Alaska Highway, Haines Junction, YT Y0B 1L0, Canada, 867-634-2817 Delivering an authentic Yukon experience at the base of Kluane National Park. . Explore, rejuvenate, and create lasting memories with amenities that include gourmet meals, locally-roasted coffee, a sauna, hot tub, fire pit, and a meditation room.

### **Destination Distinctive Dining**

**Mile 1016 Pub** 118 Marshall Creek Road, Haines Junction, YT Y0B 1L0, Canada, 867-634-2093 A casual eatery with a serious view serving appetizers, salads, and burgers.

**Frosty's Restaurant,** 200 Alaska Highway, Haines Junction, YT Y0B 1L0, Canada, 867-634-7070 Sandwiches, burgers, pizza, 14 flavors of ice cream, beer and wine.

**Village Bakery,** 116 Auriol Street, Haines Junction, YT Y0B 1L0, Canada 867-643-2867 Haines Junction's favorite place for fresh baked treats, sourdough cheese stick and Friday night salmon bake.

## DAY FOUR

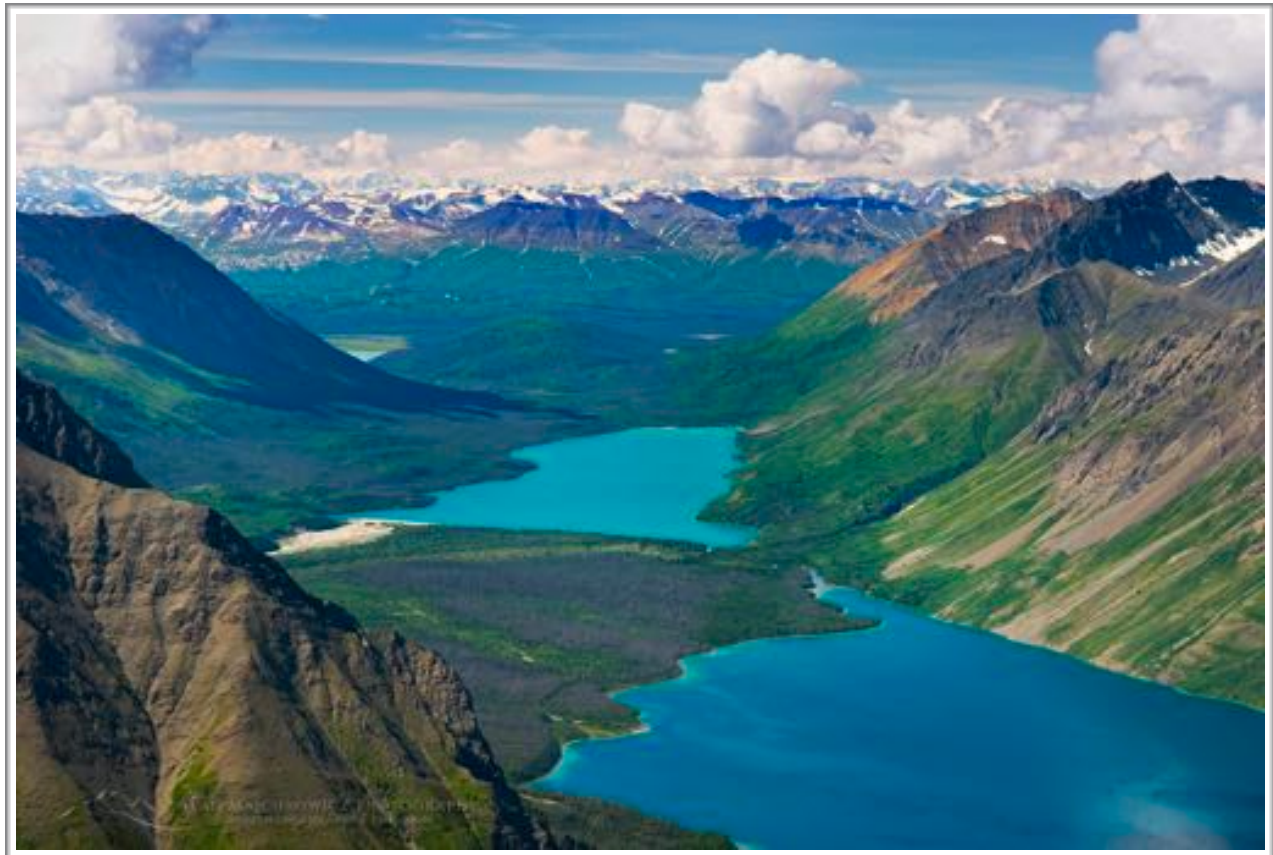
### **Da Ku Cultural Centre**

This inventive cultural facility celebrates the traditions and heritage of the Champagne and Aishihik First Nations People with interpretive programming dedicated to the citizens of Haines Junction and the general public. Come hear the language and stories of the First Nations People and their strong connection to the land. Exhibits include panels on historic villages and contemporary communities, traditional dance regalia and instruments, and family heirlooms, and a gift shop featuring locally made one-of-a-kind pieces.

280 Alaska Highway, Haines Junction, YT Y0B 1L0, Canada, 867-634-3300 Mid-May - Sept 8:30AM-6PM.







### **Kluane National Park and Reserve Visitor Center**

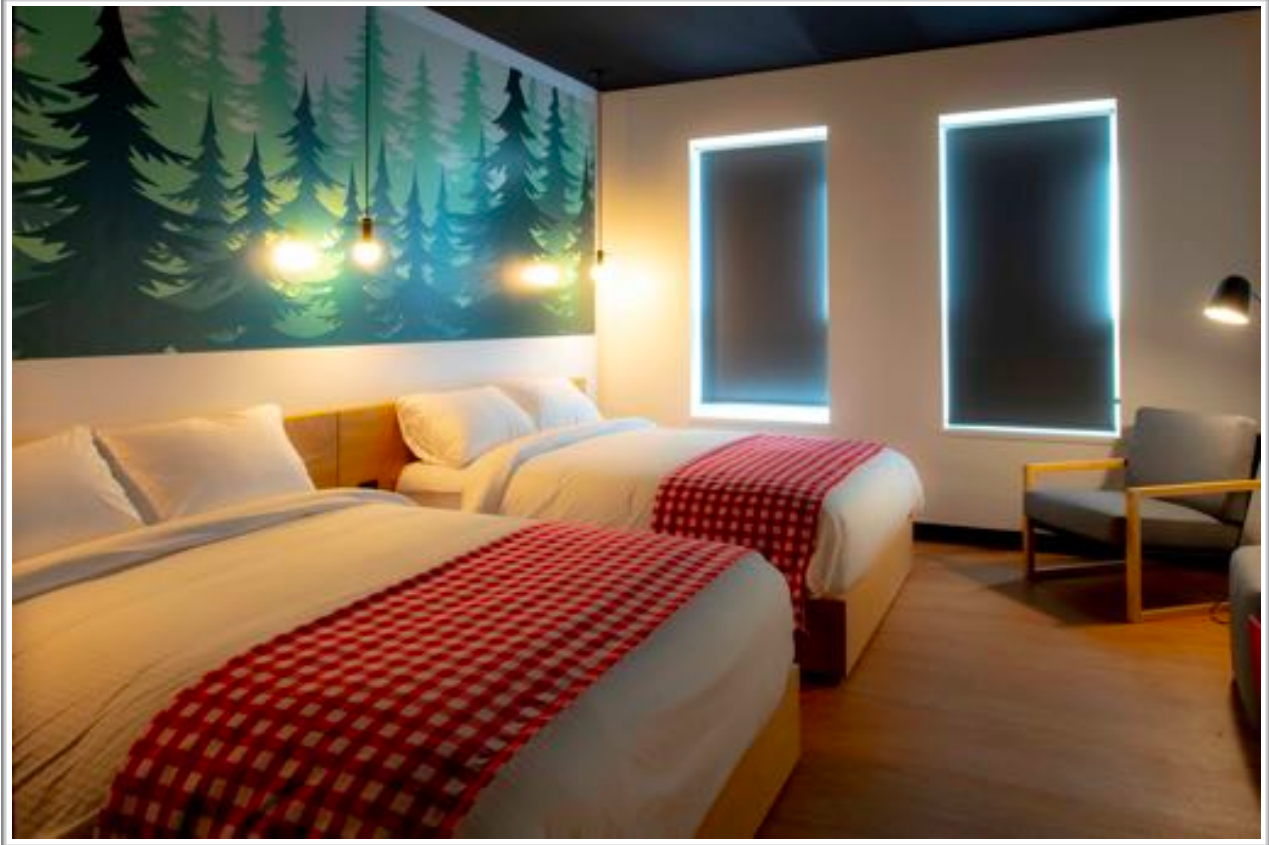
In an extraordinary expanse of land dominated by glaciers, Kluane National Park and Preserve is home to the largest non-polar ice fields in the world, as well as Mount Logan, the highest mountain in Canada. Popular activities include hiking alpine passes on backcountry trails, rafting past calving glaciers, boating in the crystalline waters of Kathleen Lake, snowshoeing and dog sledding over freshly fallen snow, and birdwatching for a number of species including mountain bluebirds and golden eagles. The Thechal Dhal Visitor Centre, located in the park one hour northwest of Haines Junction, offers exhibits on First Nations Peoples, a panoramic deck with a spotting scope, a gift shop, and staff on hand to answer questions. The Kluane National Park and Reserve Visitor Centre is located in the Da Ku Cultural Centre.

280 Alaska Highway, Haines Junction, YT Y0B 1L0, Canada, 867-634-7207 Mid-May - Sept 9AM-5PM.

## **Whitehorse**

On the drive to Whitehorse, you'll pass through **Champagne Landing**, a small First Nations settlement on the original Dalton Trail. Named after the White Horse Rapids for their resemblance to a mane of a charging white horse, Whitehorse is the capital of the Yukon and the largest city in Northern Canada. Settlers arrived in this area in the late 1800's, but it wasn't until 1900 that the White Pass & Yukon Railway was completed that Whitehorse became a major transportation hub for freight between the coast and Dawson City. After the Alaska Highway was completed in 1942, the city experienced a population boom and two and three-story log cabins, or "log skyscrapers," were seen all over town.





### **Destination Distinctive Accommodations**

**Raven Inn**, 150 Keish Street, Whitehorse, YT Y1A 0N9, Canada, 867-466-7777

The new hip hotel in Whitehorse with apartment style accommodations.

### **Destination Distinctive Dining**

**Woodcutter's Blanket** 2151 Second Avenue, Whitehorse, YT Y1A 2J5, Canada, 867-334-5843 A classic cocktail bar, brewery, and restaurant located in a historic Yukon log cabin.

**Klondike Rib and Salmon**, 2116 Second Avenue, Whitehorse, YT Y1A 28A, 867-667-7554, Truly unique with grilled bison, wild elk, fish, ribs, pasta, veggie options and scrumptious desserts.

### **Destination Distinctive Retail**

**Yukon Artists @ Work** 4129 Fourth Avenue, Whitehorse, YT Y1A 1H7, Canada, 867-393-4848 A cooperative arts gallery run entirely by Yukon artists and displaying paintings, sculptures, carvings, pottery, fur and fabrics arts, and more by local artists.

**Horwoods Mall**, 100 Main Street, Whitehorse, YT Y1A 1A3, Canada, Electric mix of stores with a gallery, bagel shop, toy store and trendy cafe.

## DAY FIVE

### **Kwanlin Dün Cultural Centre**

Share stories and celebrate the heritage and contemporary way of life of the Kwanlin Dün First Nation. The Centre's permanent collection features artwork and artifacts from around the Yukon which tell the history and continued innovation of KDFN Citizens. A variety of workshops and programs highlight artisan crafting techniques like leatherwork and moose hair tufting.

1171 First Avenue, Whitehorse, YT Y1A 0G9, Canada, 867-456-5322 M-F  
11AM-4PM.

### **MacBride Museum**

Over 40,000 objects and artifacts showcasing the Yukon's natural, social, economic, and industrial history are on view at the region's first museum. Hear stories from the resilient people and groundbreaking events that shaped the modern Yukon, from First Nations to the Klondike Gold Rush. Incredible artwork from Ted Harrison and the Northern Lights icicles are also on view.

1124 Front Street, Whitehorse, YT Y1A 1A4, Canada, 867-667-2709 Tu-Sa  
10AM-3PM, Adults \$10.





### **S.S. Klondike National Historic Site**

Between 1937 and 1950, the S. S. Klondike ran freight between Whitehorse and Dawson City along the Yukon River. The largest of the fleet managed by the British Yukon Navigation Company, the *Klondike* had 50% more capacity than a regular sternwheeler while still meeting the size requirements to successfully travel the river. The construction of an overland highway between the two cities led to the decommissioning of the ship, and in 1967 it was designated a National Historic Site of Canada. Restored and refurbished, it now serves as a tribute to an era when riverboats provided a link to the outside world.

10 Robert Service Way, Whitehorse, YT Y1A 1V8, Canada, 867-667-3910 Open daily during summer months, Adults \$4.25.

### **Yukon Beringia Interpretive Centre**

This research and exhibition facility is your window into Yukon's geologic and natural history. With amazing dioramas and complete skeletons of area animals and a life-sized replica of the Bluefish Caves archeological site, you will be immersed in the natural heritage of the vast sub-continent known as Beringia. Alaska Highway, Whitehorse, YT Y1A 6E6, Canada, 867-667-8855 Summer: Daily 12PM-5PM, Winter: Sa-M 12PM-5PM, Adults \$6.



### **Destination Distinctive Accommodations**

**Southern Lakes Resort and Restaurant**, 1702 Ten Mile Road, Tagish, YT 1T0, Canada  
867-443-9160

Traditional log cabins with a modern touch – you’ll feel right at home in our spacious cabins. Not to mention the view – ah, the view! Every morning, you discover something new, a different light, the sun shining through the clouds, mist rising from the lake, or a squirrel running across your balcony.

### **Destination Distinctive Dining**

**The Bistro on Bennett Commons**, 1B0, Carcross, YT, Canada, 867-821-3002 A unique bar and grill serving regional delights, local northern sensations, and a whole lot of character.

### **Destination Distinctive Retail**

**Matthew Watson General Store** 5 Dawson Charlie Street, Carcross, YT Y0B 1B0, Canada.

Travel back in time at the Yukon’s oldest operating store, in business since the 1898 Klondike Gold Rush! Find antique goods, modern apparel, local Yukon gifts, and a delicious piece of homemade fudge.

**Carcross Commons** Yukon Road, Carcross, YT Y0B 1B0, Canada Your one-stop-shop for visual art, traditional Tlingit and Tagish Totem Poles, live performances, 20 local artisan boutiques, and a charming restaurant and coffee shop.

## DAY SIX



### **Carcross**

Originally named Caribou Crossing due to the massive caribou migration that took place on the city's natural land bridge, the community was renamed in 1904 to distance itself from British Columbia's Cariboo Regional District. The town has traditionally served as a communication point on the Yukon River and a popular resting spot for prospectors on their way to the Dawson City gold fields. Today, nearby Montana Mountain offers some of the world's best mountain biking while the 42km-long Bennett Lake provides crystal clear water, sandy beaches, and back country camping spots for adventurous sun-seekers.

### **Carcross Historic Building Walking Tour**

Highlights of this 34-stop historic building walking tour include the Caribou Hotel, home to a third-floor ghost; Matthew Watson General Store, one of Yukon's longest operating businesses; the longest continuously used Post Office building in the Yukon; the Phelps House, a 1905 log cabin; Sibilla, a 1932 British Yukon Navigation Co. motor vessel; and the Swing Bridge, a 125-meter railway bridge built in 1900 that is still in use today.

Tour begins at the White Pass & Yukon Route Railroad Depot.



## **Skagway**

The word “Skagway” comes from a Tlingit word Shgagwei, meaning “bunched up or roughed up water” for the whitecaps that form on the water in strong winds. When gold was found in the Klondike region in 1896 and thousands of people rushed to try their luck in the fields, many realized the difficulty of the journey north and instead stayed in Skagway to supply goods and services to the miners making the trek. By 1898, Skagway was the largest city in Alaska and home to hundreds of homes, stores, and saloons. The town is now a major cruise port for ships exploring the Alaska panhandle and the popular downtown corridor offers a glimpse into what life was like during the gold rush day.

## **Skagway Museum**

Housed in the historic McCabe College building, this museum invites you to explore Skagway’s unique history as an important gateway to the Yukon through artifacts, photographs, and historical records. Collections include a Tlingit canoe, Bering Sea kayaks, a Portland Cutter Sleigh, tools, and gambling equipment used during the Gold Rush.

700 Spring Street Skagway, AK 99840, 907-983-2420 Summer: Open Daily.





### **Destination Distinctive Accommodations**

**Historic Skagway Inn** 655 Broadway, Skagway, AK 99840, 907-983-2289 Cozy bed and breakfast rooms in a historic 1897 building that originally operated as a brothel. Discover the history, mystery, and magic of the Klondike Gold Rush era.

### **Destination Distinctive Dining**

**Skagway Brewing Company** 204 Fourth Avenue, Skagway, AK 99840, 907-983-2739 American comfort food and house microbrews in a fun and inviting setting.

**Northern Lights Pizzeria** 336 Third Avenue, Skagway, AK 99840, 907-983-2225 Casual bites, beer and wine, and locally-made pizzas.

**Bonanza Bar and Grill** 280 Third Avenue, Skagway, AK 99840, 907-983-6214 Snacks, appetizers, salads, burgers, wraps, sandwiches, and other Alaskan favorites.

### **Destination Distinctive Retail**

**A Fine Line Alaskan Gifts** 551 Broadway, Skagway, AK 99840, 907-612-0344 Jewelry, hand-blown glass art, natural stone gifts, and other works by 36 different Alaskan artists.

**Gold Rush Gifts** 200 Second Avenue, Skagway, AK 99840, 907-983-3921 Gourmet foods, soaps, jewelry, art, and other unique items by over 40 made-in-Alaska companies.

## DAY SEVEN

### **Klondike Gold Rush National Historical Park Visitor Center.**

When the dream of fame, fortune, and a better life thrust thousands of people towards Alaska and the Yukon Territory, the city of Skagway and its surrounding area was forever changed when gold fever took over. This historic park celebrates the Klondike Gold Rush of the late 1890's. The Visitor Center exhibits old photos and films recounting the era; park rangers, restrooms, and water stations are also available.

291 Broadway, Skagway, AK 99840, 907-983-9200 May-Sept: Daily 9:30AM-5:00PM, Oct-April: M-Sa 10AM-4PM.





### **White Pass & Yukon Route Railway**

Travel back in time in a vintage passenger coach as you retrace the original route to the White Pass Summit. From glaciers and gorges to tunnels and trestles, you'll be treated to panoramic views of some of Alaska's most stunning scenery, including front row seats to Bridal Veil Falls, Inspiration Point, and Dead Horse Gulch. The 40-mile round trip takes approximately 3 hours for the full experience.

201 Second Avenue, Skagway, AK 99840, 800-343-7373 May-Oct, morning and afternoon departures, Adult \$134.

### **Alaska Marine Highway Ferry to Haines**

When it's time to return to Haines, be sure to book on the Alaska Marine Highway Ferry for the 4.5 hour trip through the longest and deepest fjord in North America. Marvel at the hanging glaciers and waterfalls along the route and keep an eye out for whales, orcas and other wildlife that may be romping about. The alternative would be to take the Marine Highway Ferry all the way back to Juneau. Enjoy!